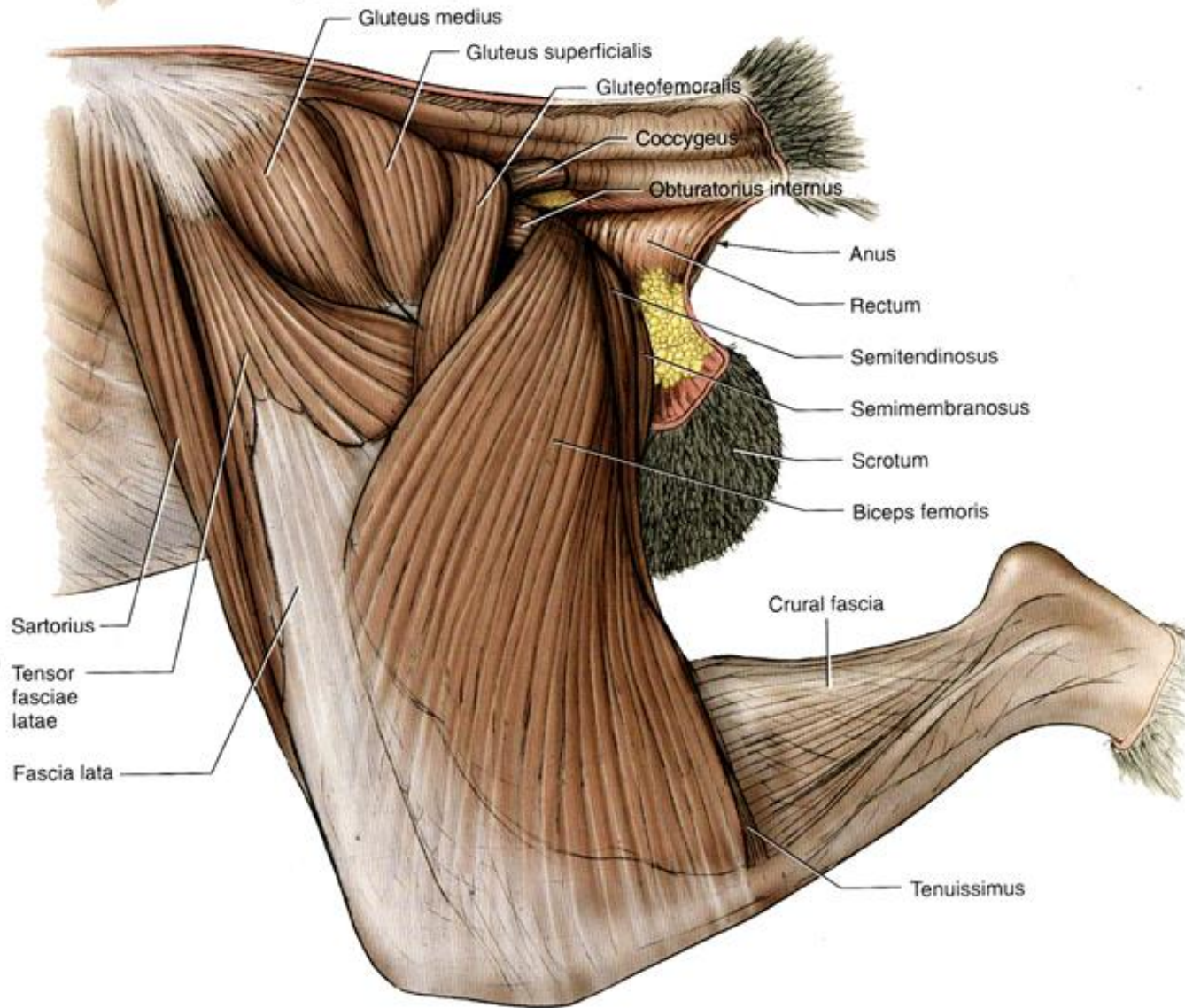
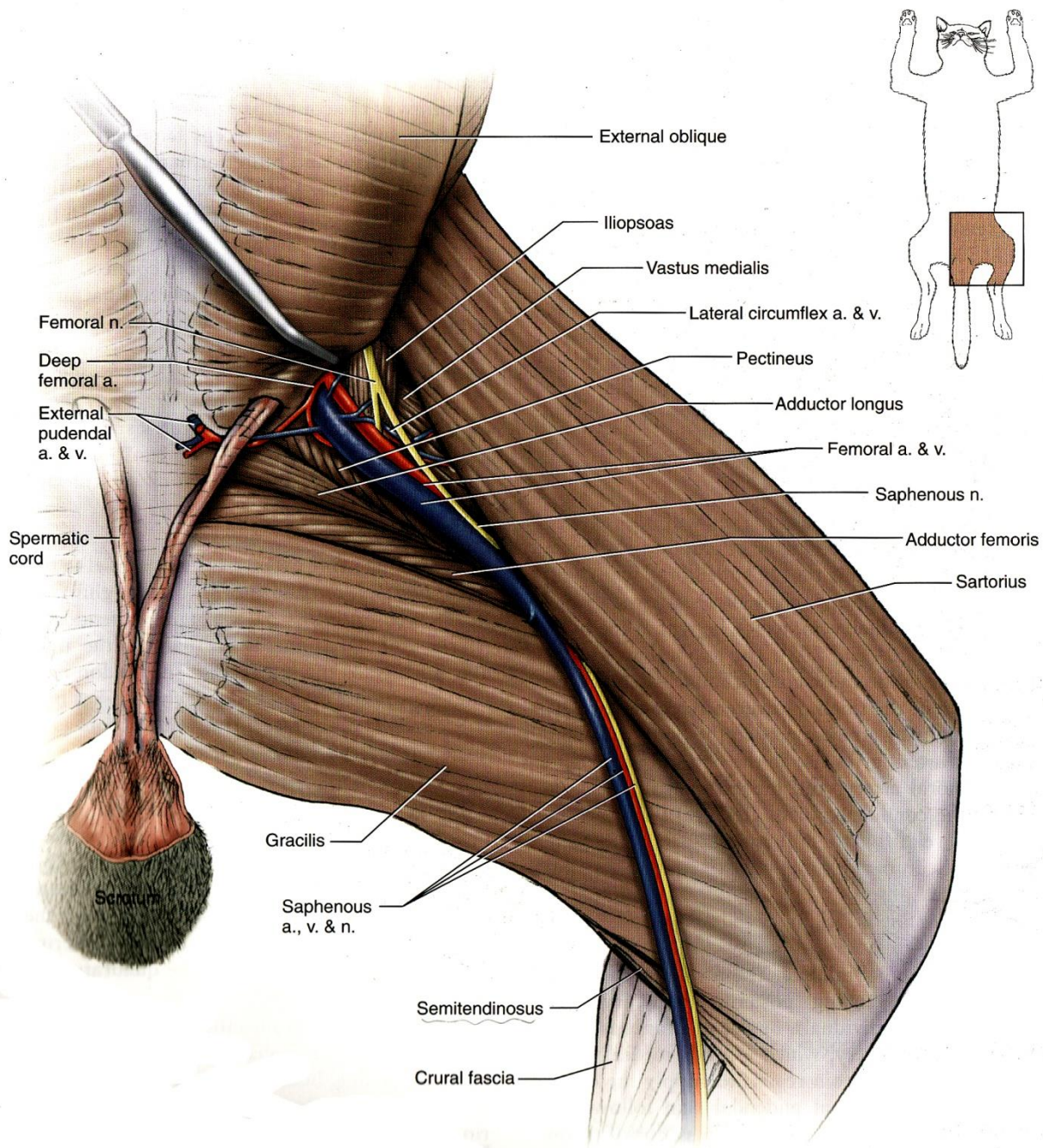


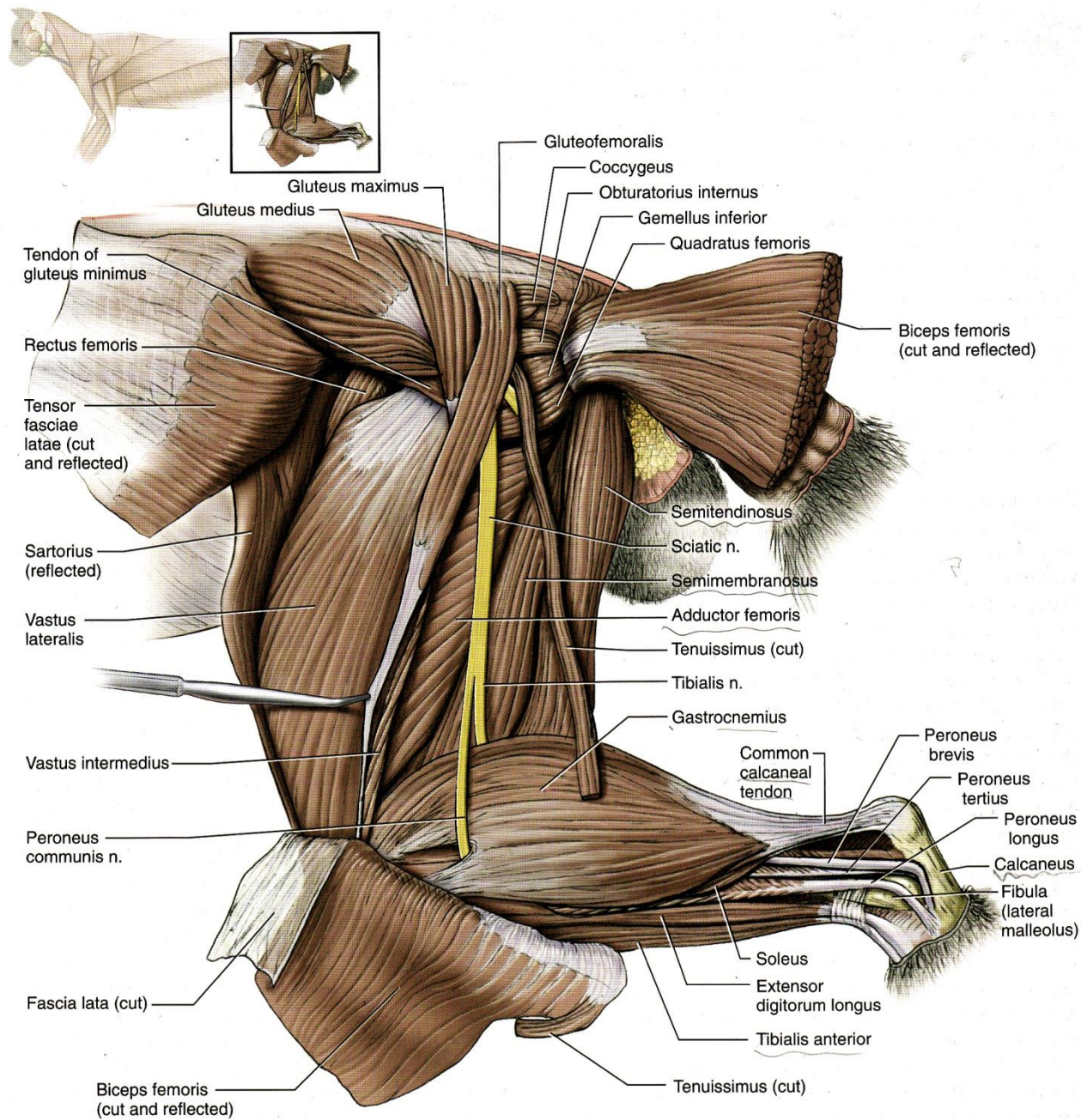
# Laboratory 9 Cat Muscular System



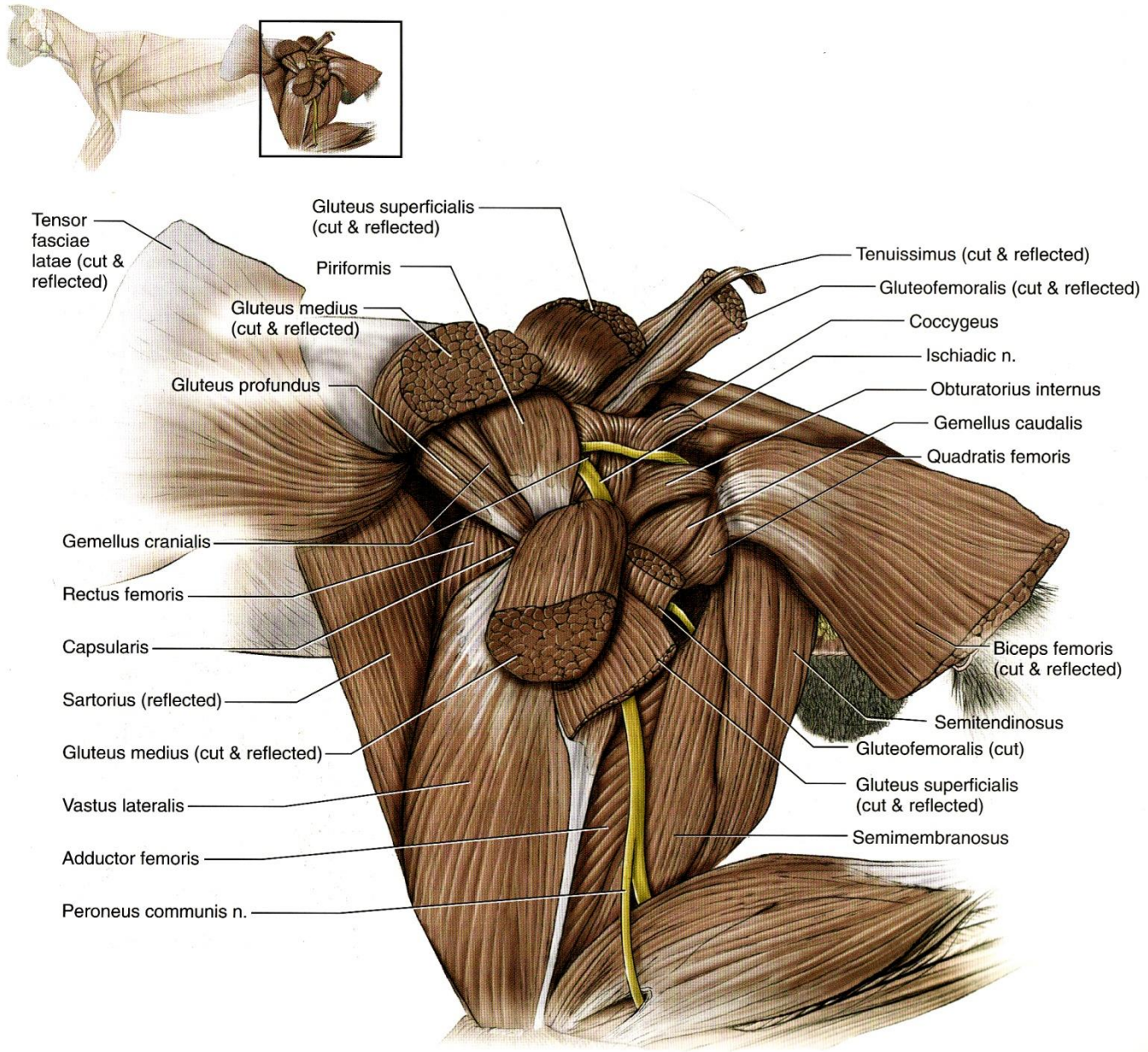
Superficial muscles of the hind limb of the cat in lateral view.



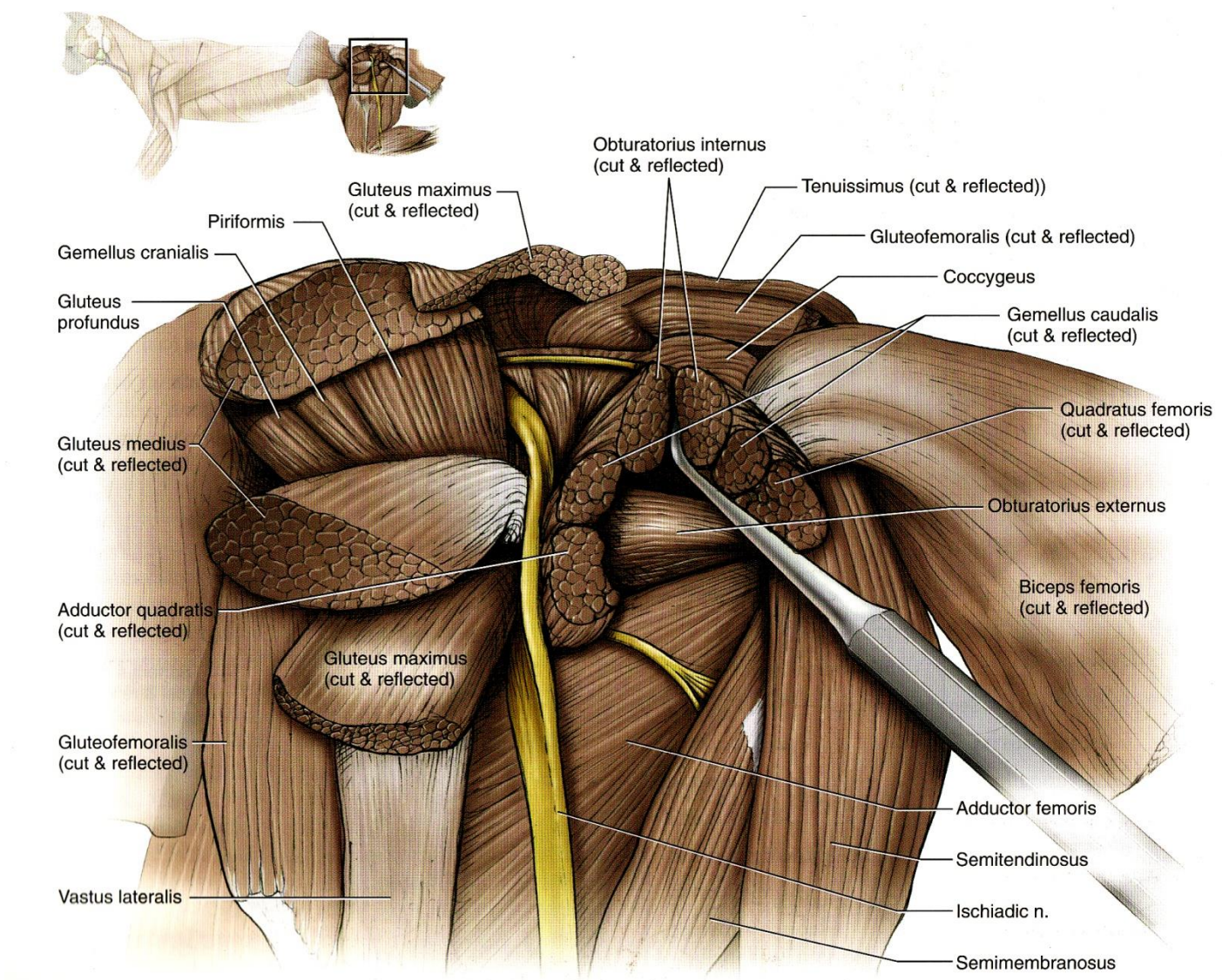
Superficial muscles of the hind limb of the cat in medial view.



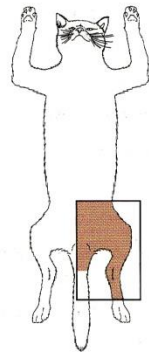
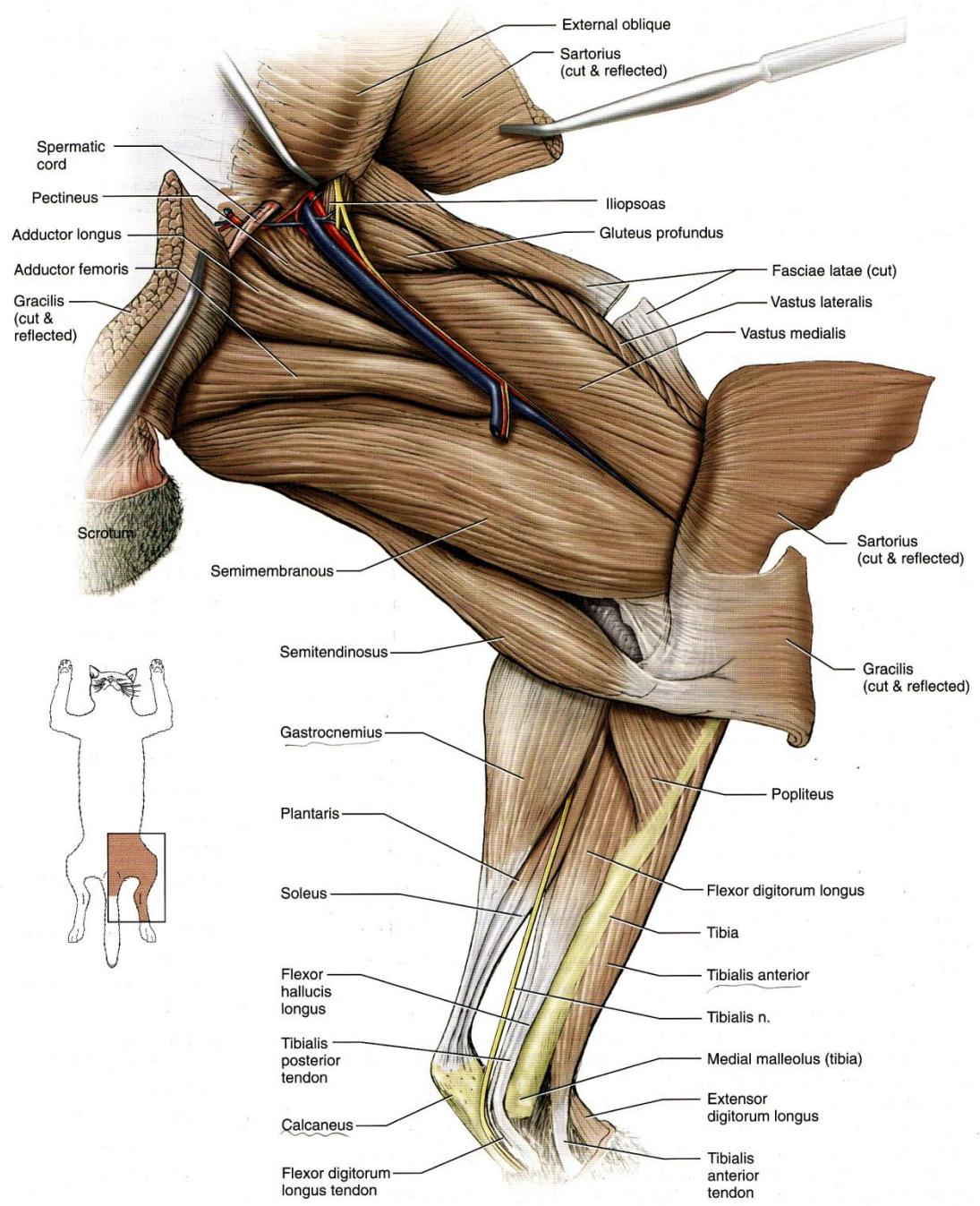
Deep muscles of the hind limb of the cat in lateral view.



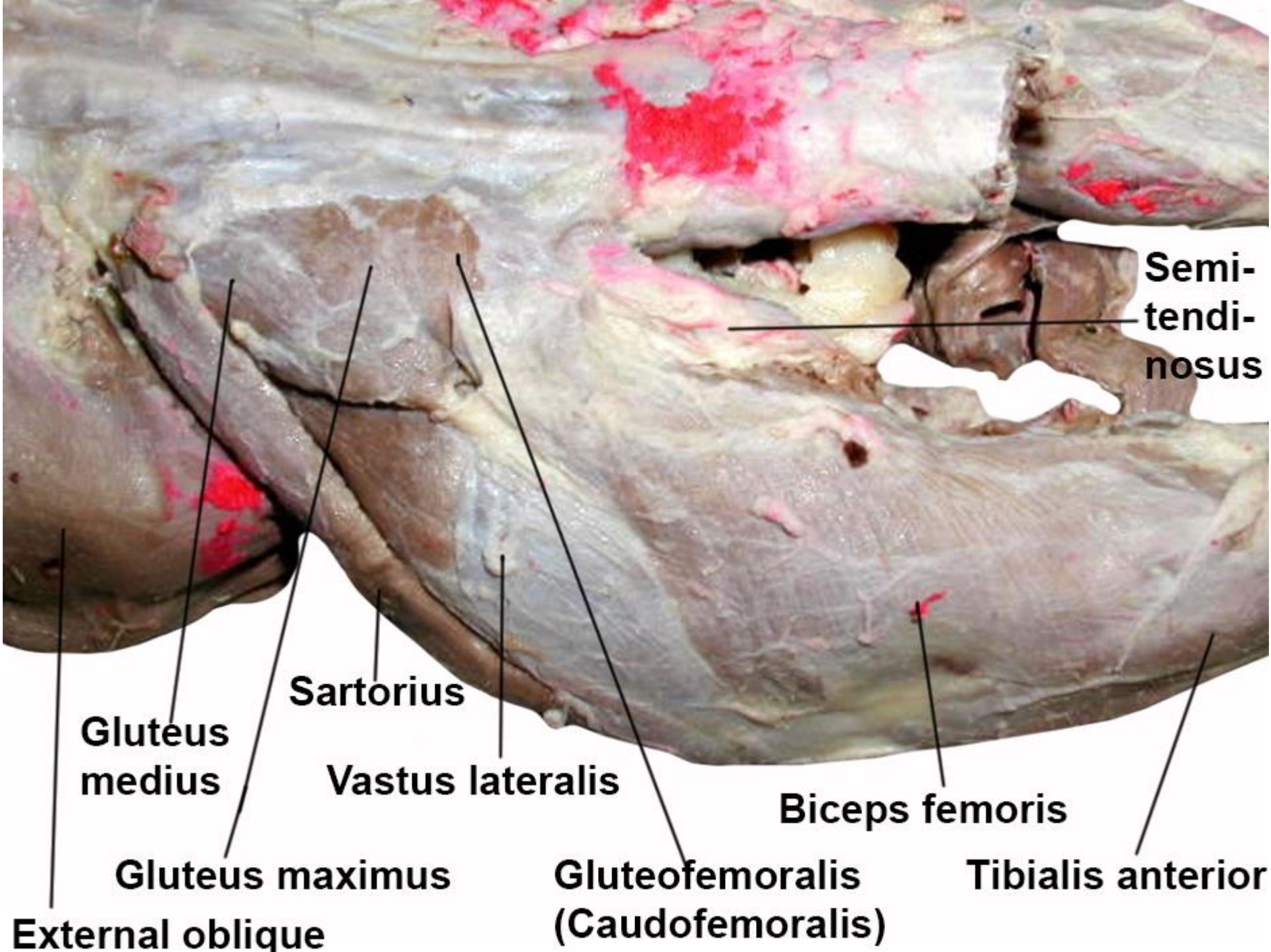
Deep muscles of the hind limb of the cat in lateral view.



Deep muscles of the hind limb of the cat in lateral view.



Deep muscles of the hind limb of the cat in medial view.



**Semi-tendinosus**

**Gluteus medius**

**Sartorius**

**Vastus lateralis**

**Biceps femoris**

**Tibialis anterior**

**External oblique**

**Gluteus maximus**

**Gluteofemoralis (Caudofemoralis)**

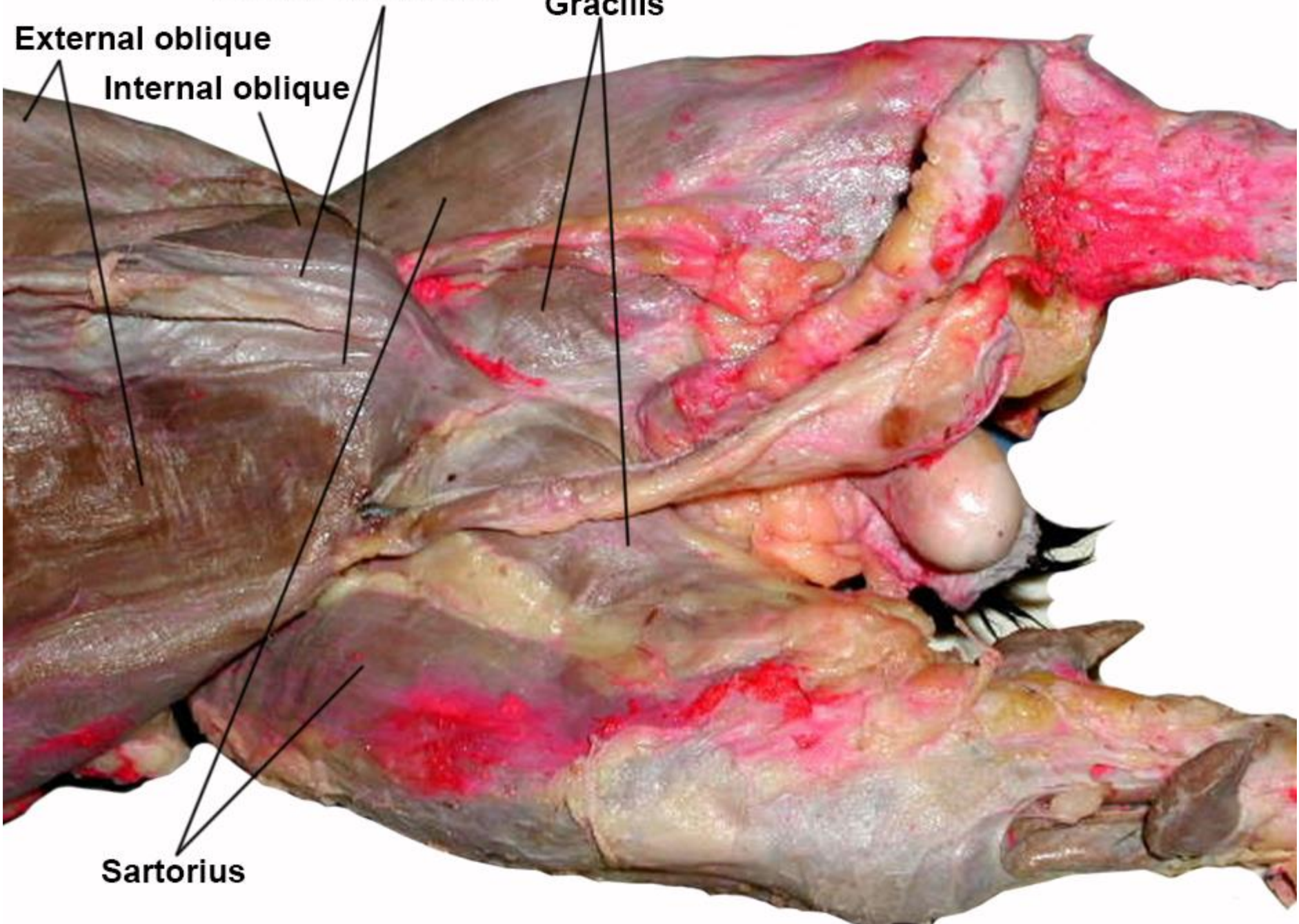
**Rectus abdominis**

**Gracilis**

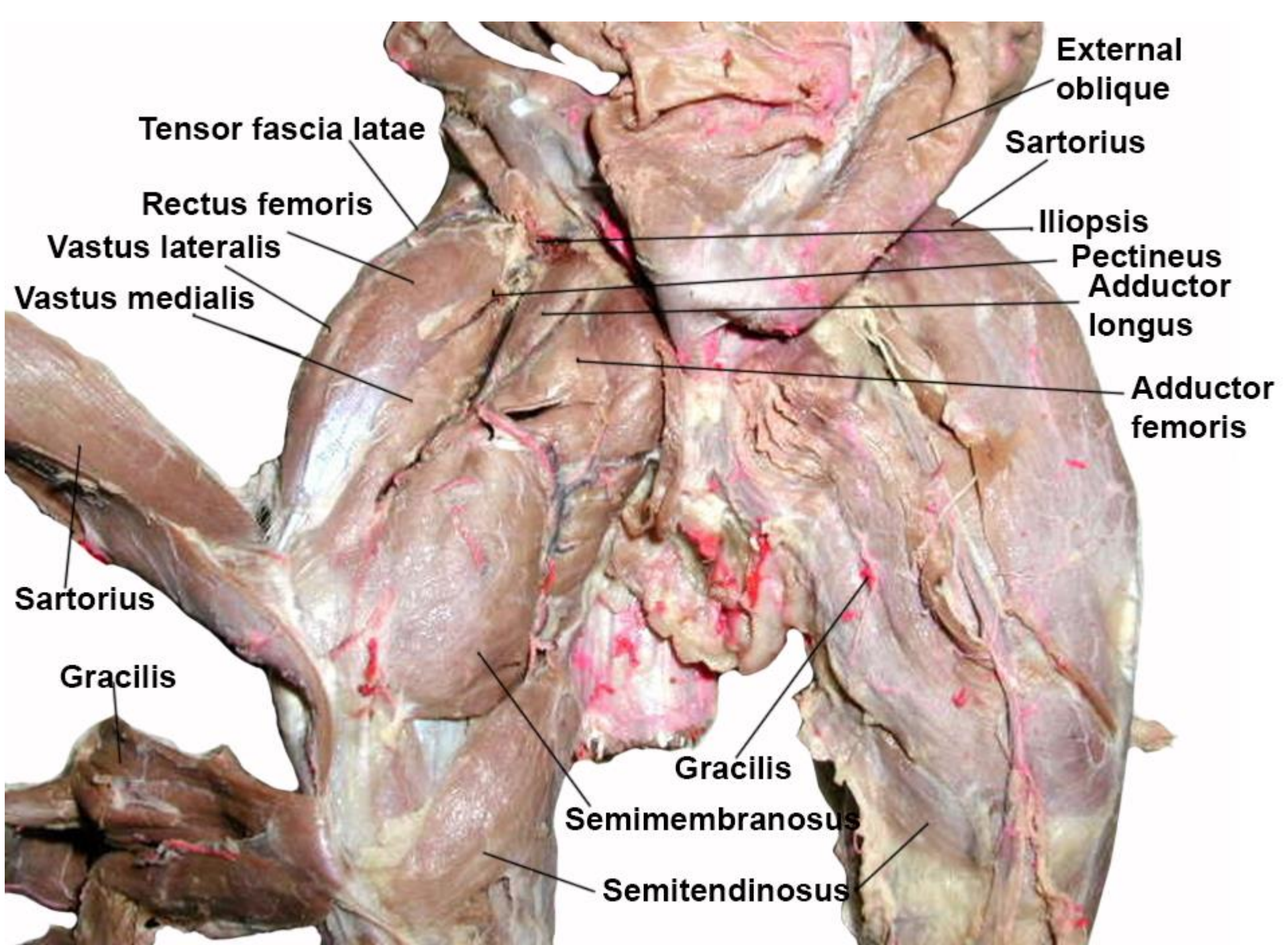
**External oblique**

**Internal oblique**

**Sartorius**







Tensor fascia latae

Rectus femoris

Vastus lateralis

Vastus medialis

Sartorius

Gracilis

Semimembranosus

Semitendinosus

External oblique

Sartorius

Iliopsoas

Pectineus

Adductor longus

Adductor femoris

Gracilis

**Tensor fascia latae**

**Iliopsis**

**Rectus femoris**

**Pectineus**

**Adductor longus**

**Adductor femoris**

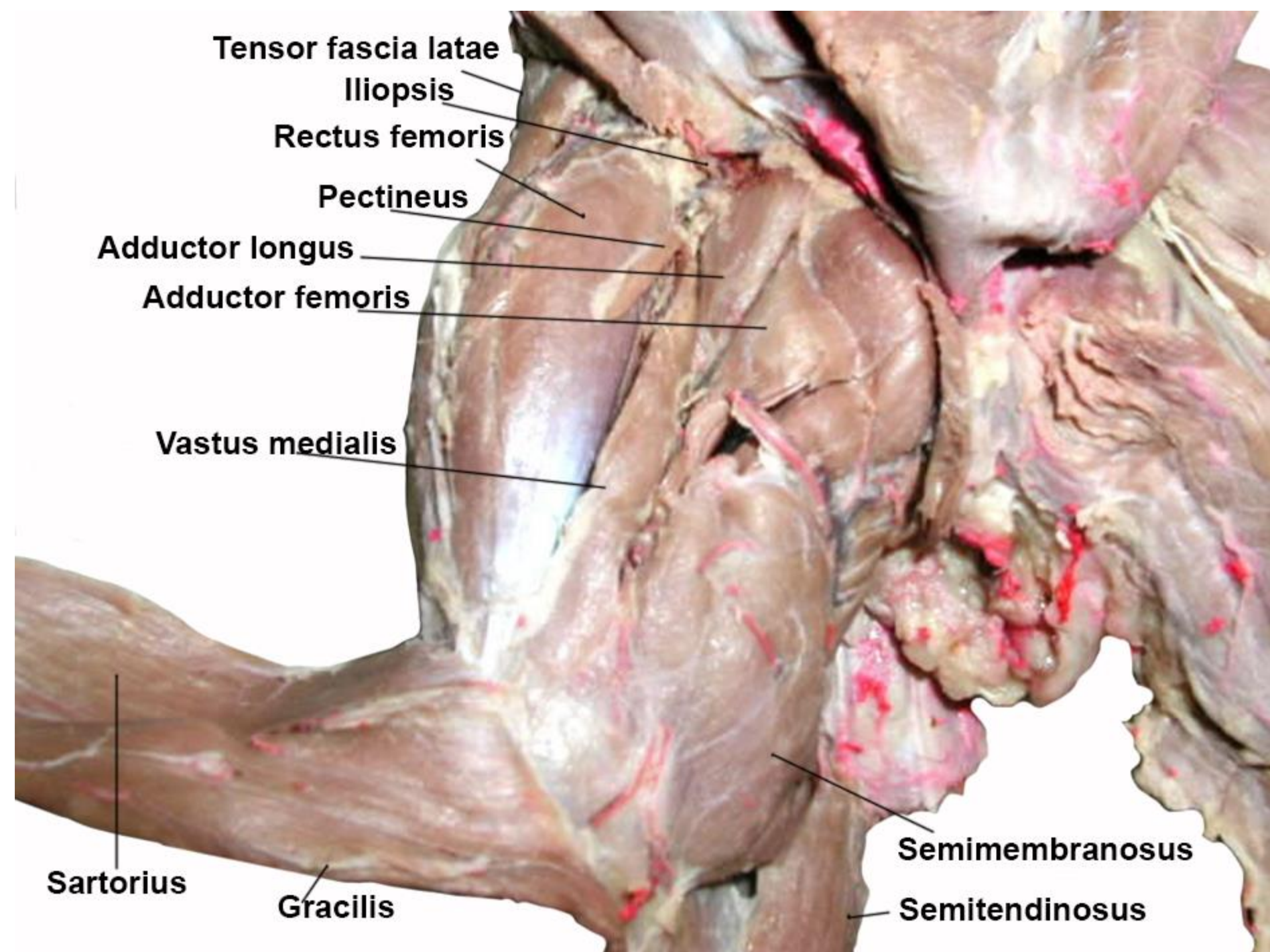
**Vastus medialis**

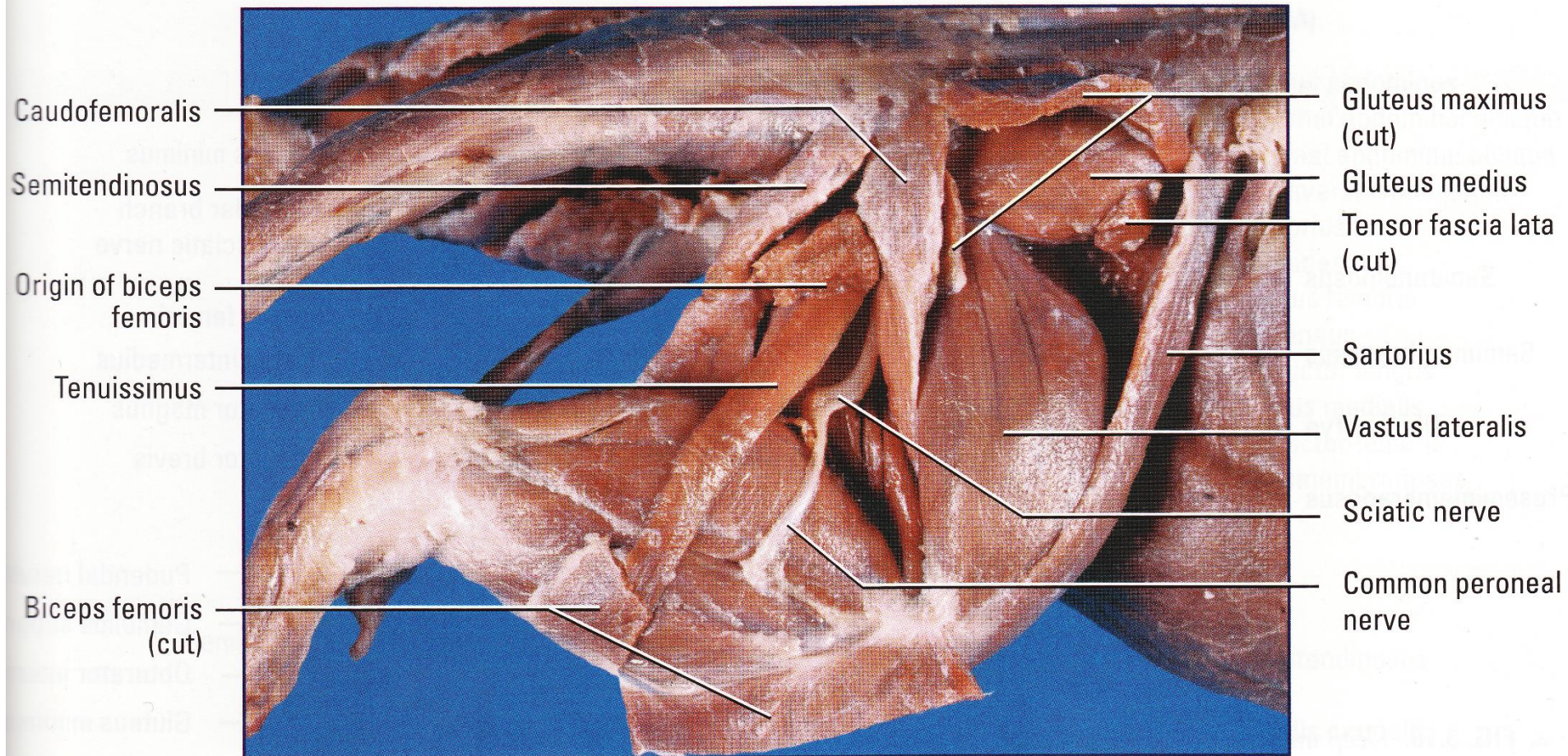
**Sartorius**

**Gracilis**

**Semimembranosus**

**Semitendinosus**





▲ **FIG. 3.17.** Middle layer of musculature of the lateral aspect of the right hindlimb.