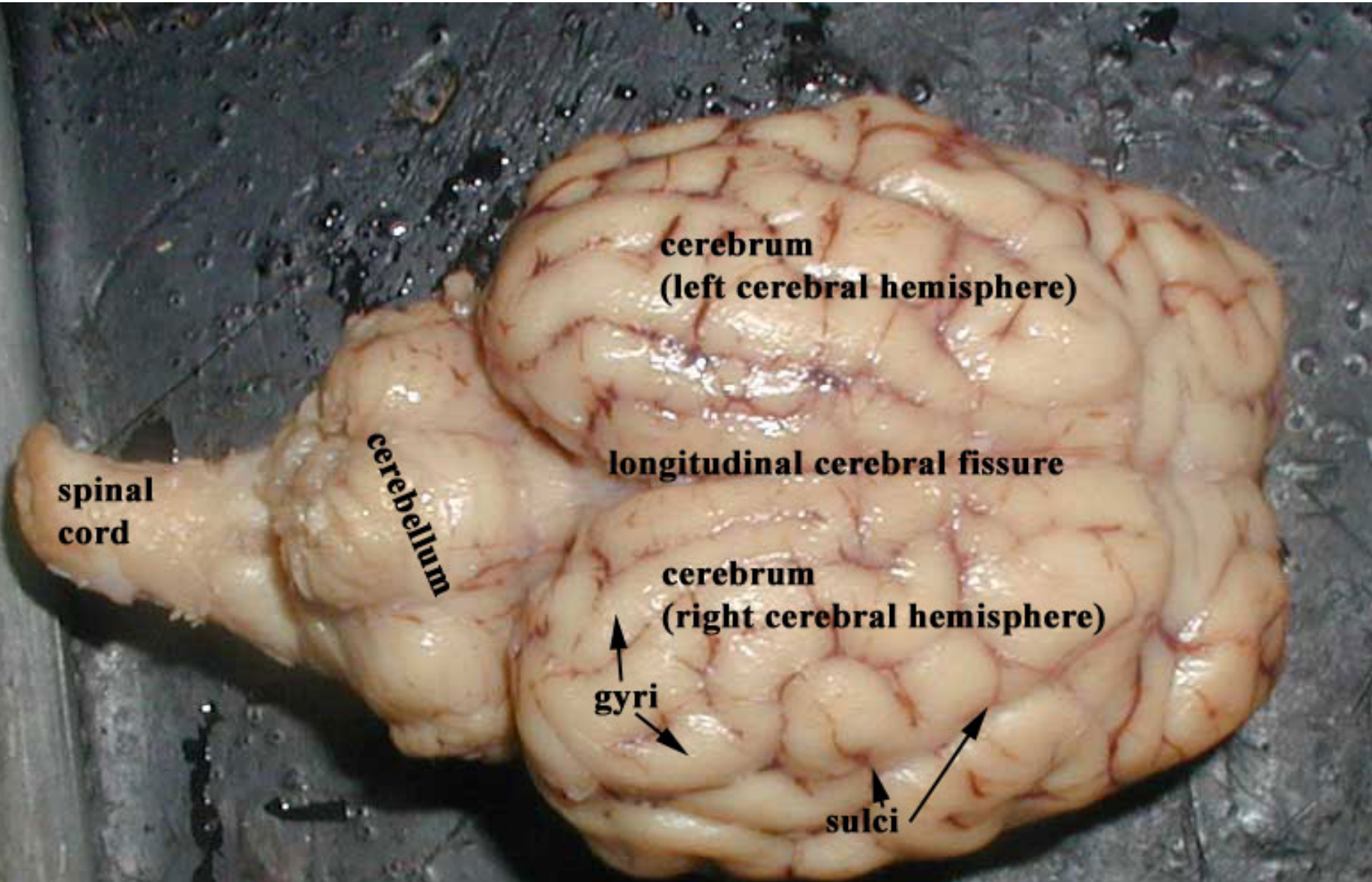


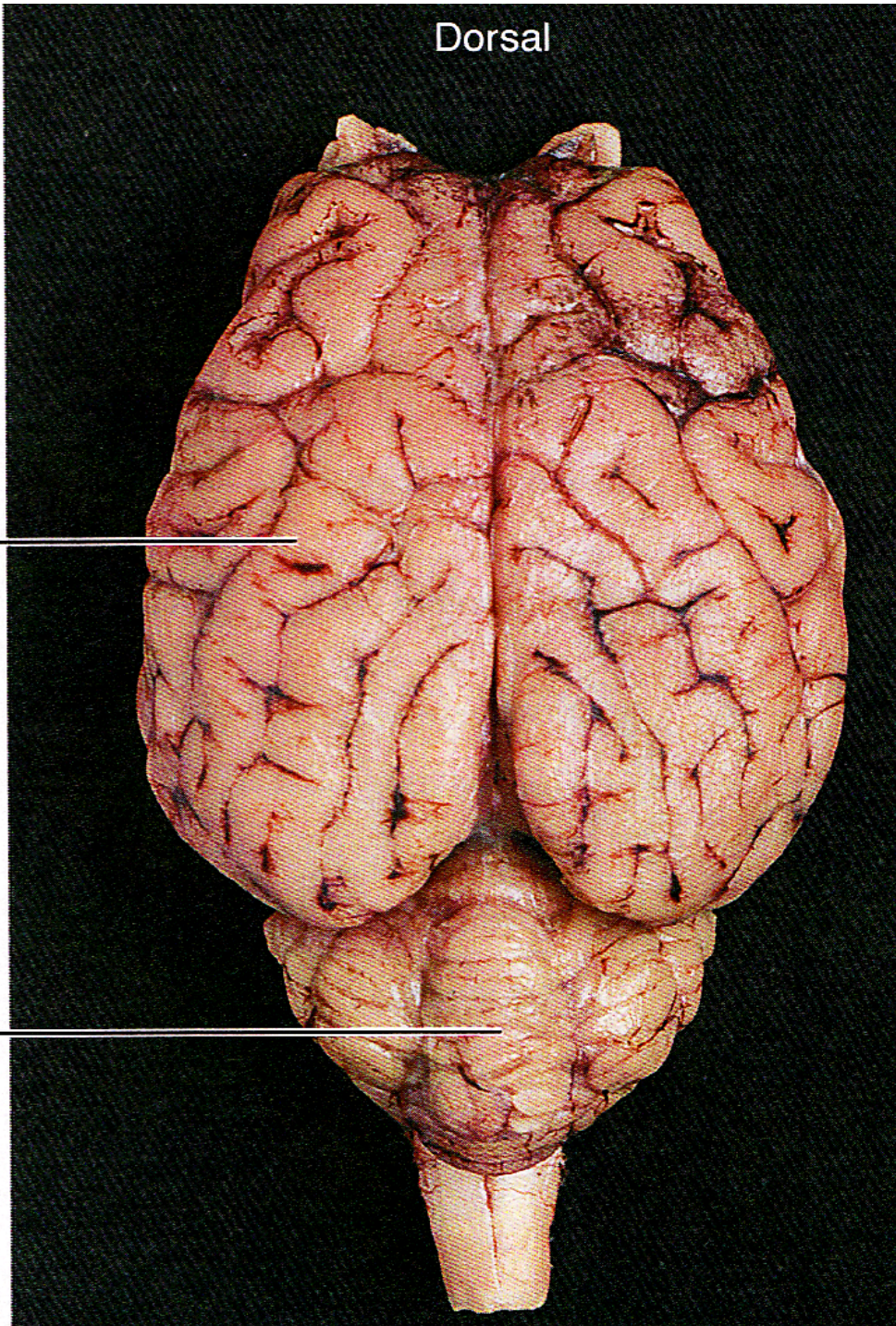
Lab 2

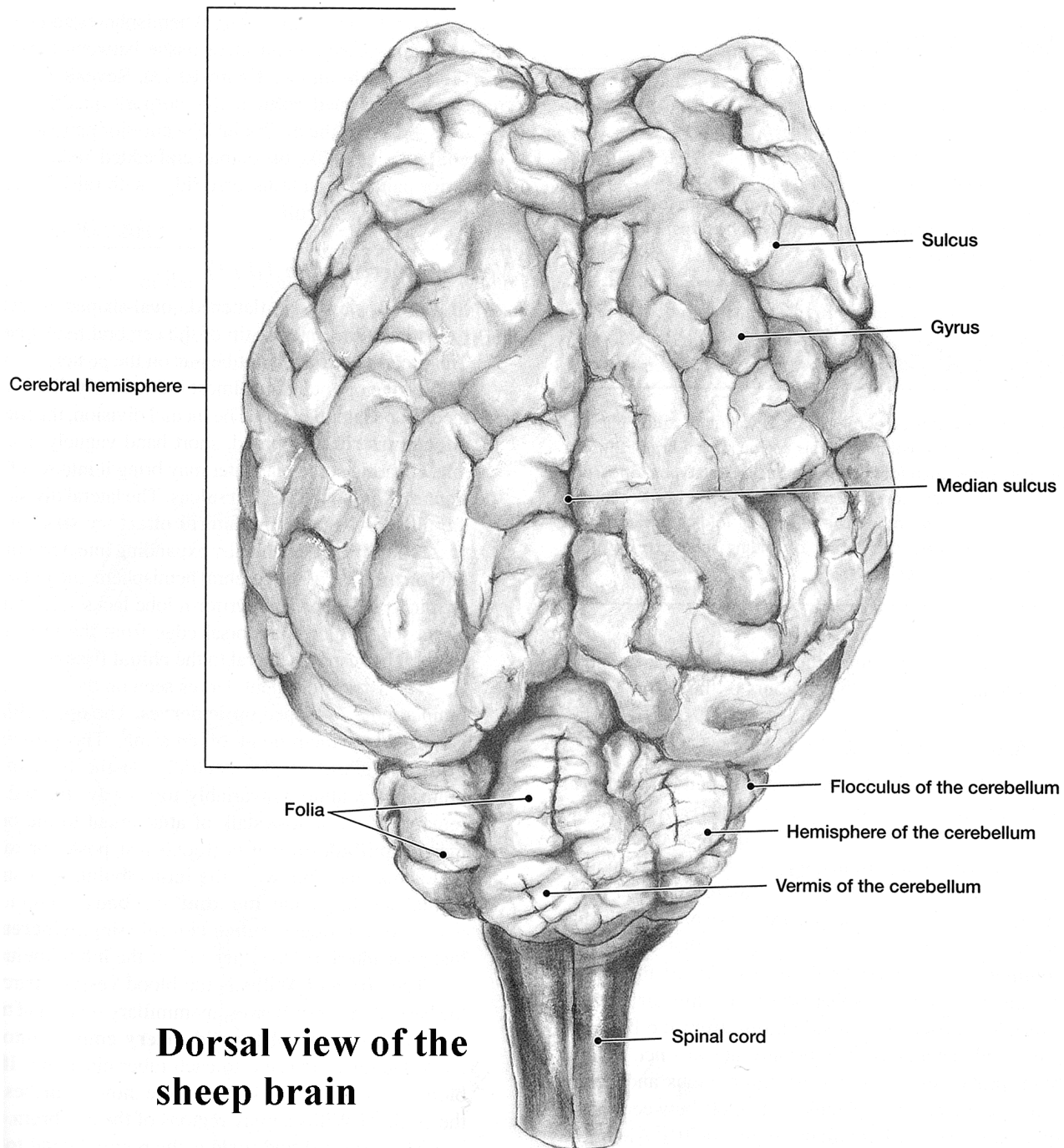


Dorsal

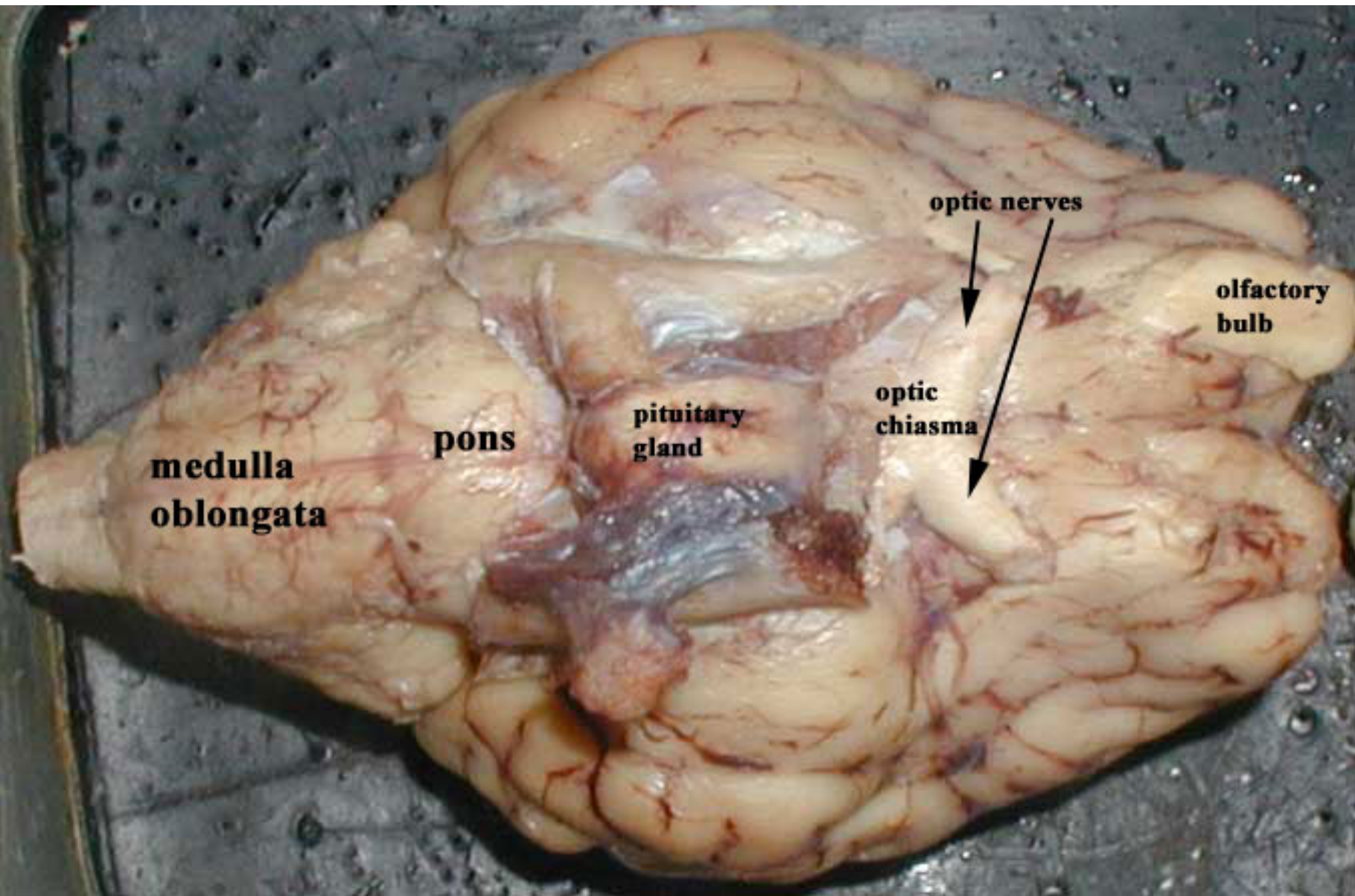
Cerebrum

Cerebellum





Dorsal view of the sheep brain



Ventral

Olfactory
bulb

Optic
nerve (II)

Infundibulum

Mammillary
body

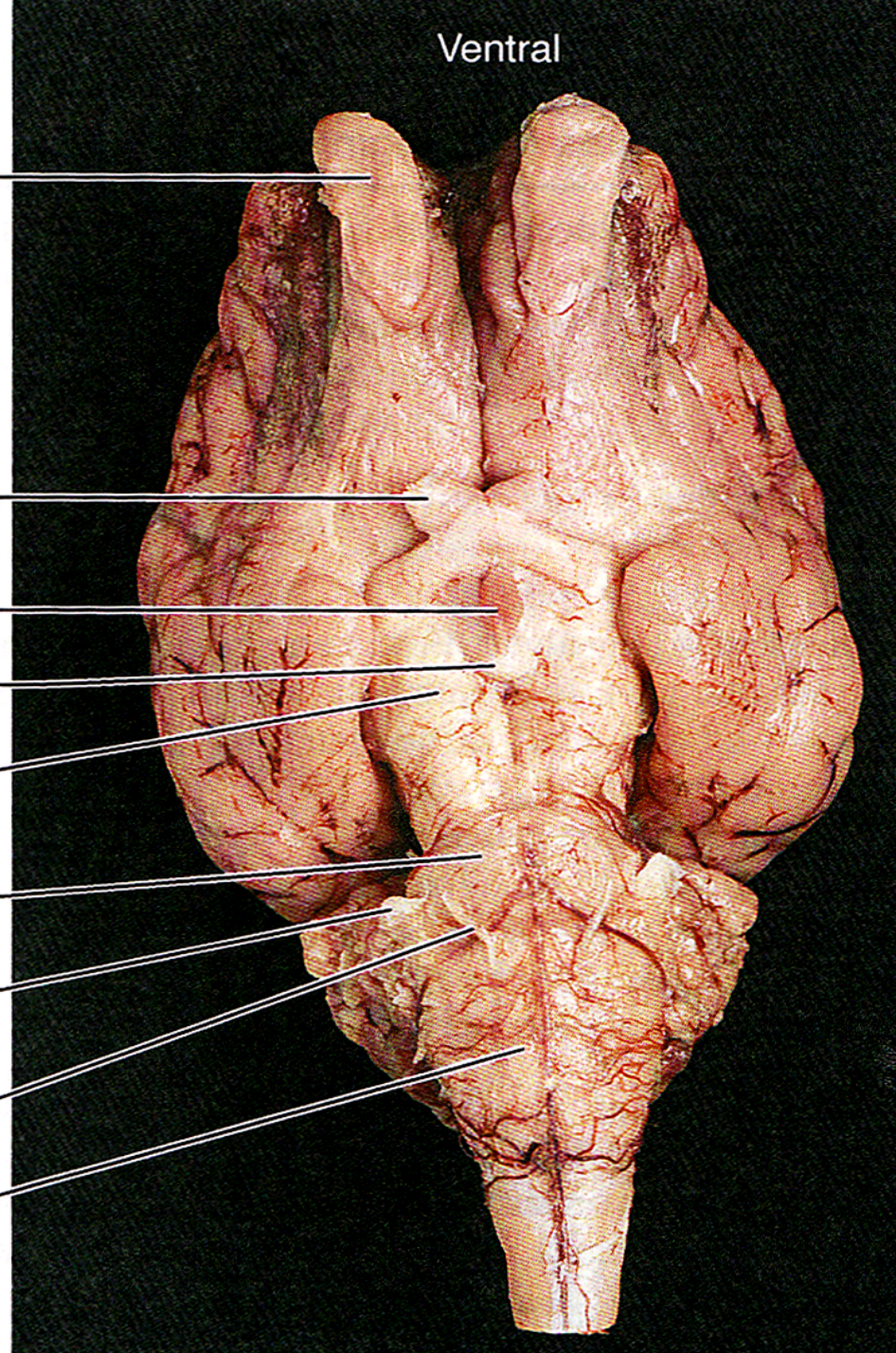
Cerebral
peduncle

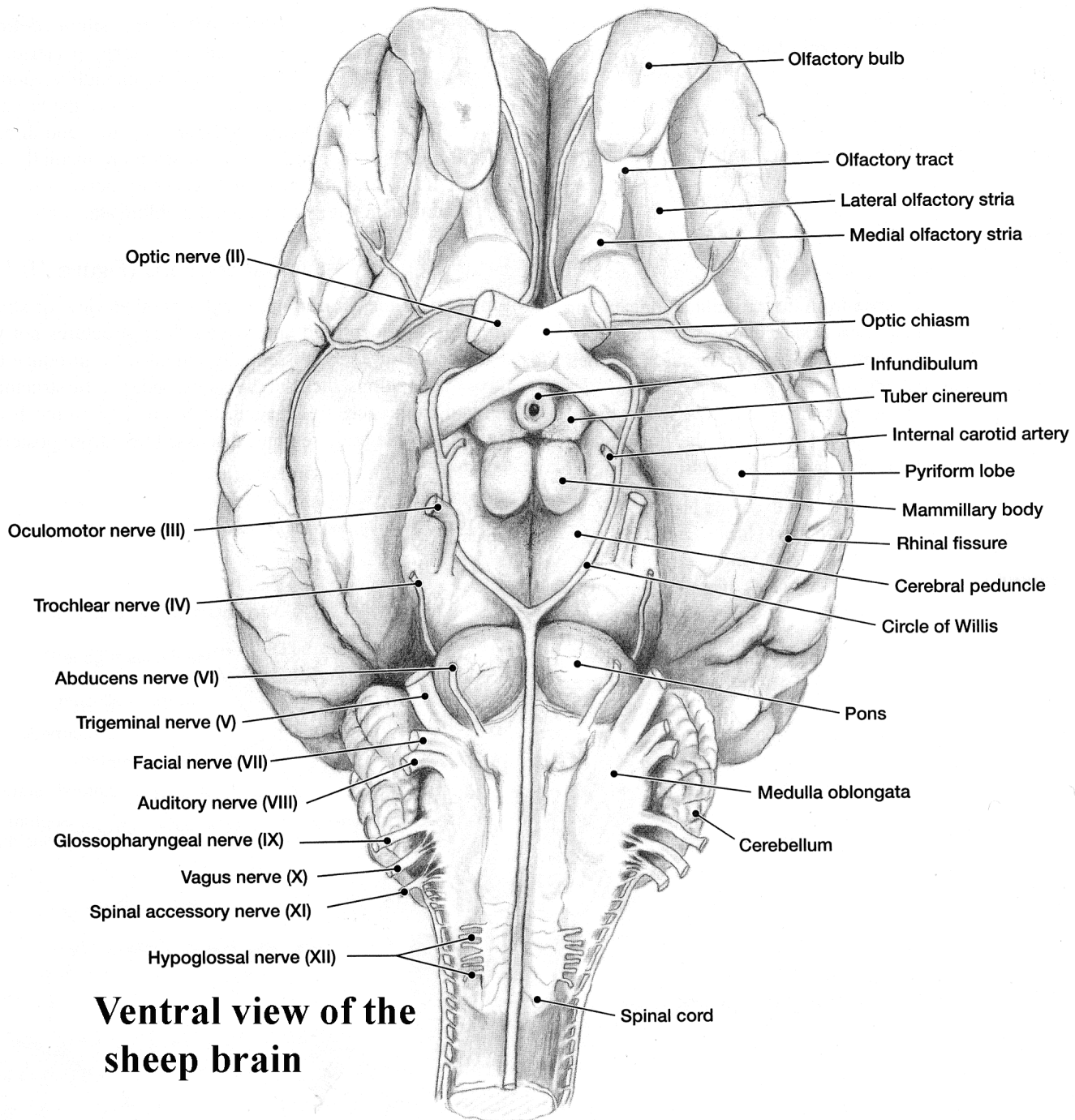
Pons

Trigeminal
nerve (V)

Abducens
nerve (VI)

Medulla
oblongata

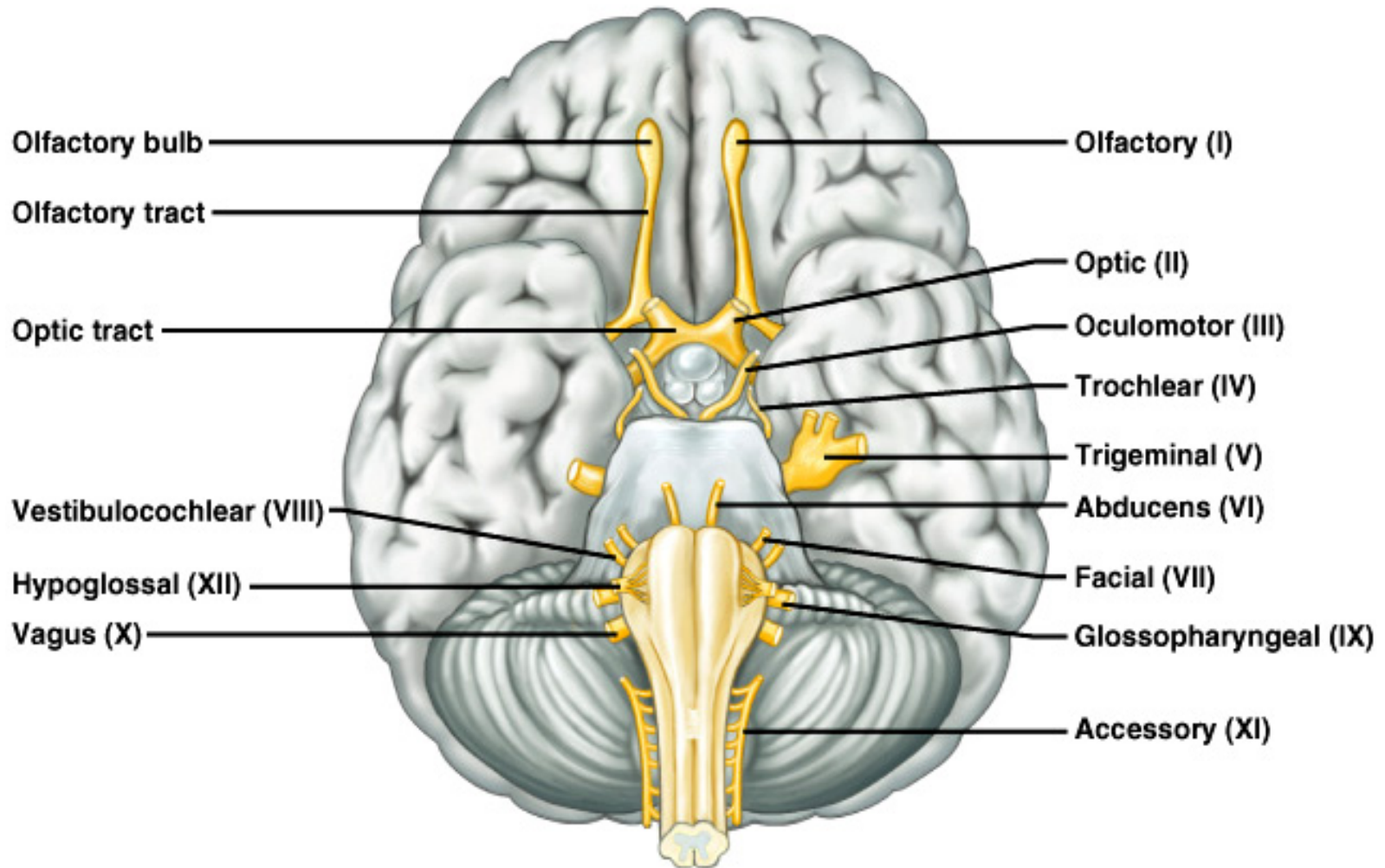




Ventral view of the sheep brain

Cranial Nerves

Copyright © The McGraw-Hill Companies, Inc. Permission required for reproduction or display.



Cranial Nerves I and II

Olfactory (I)

- sensory
- fibers transmit impulses associated with smell

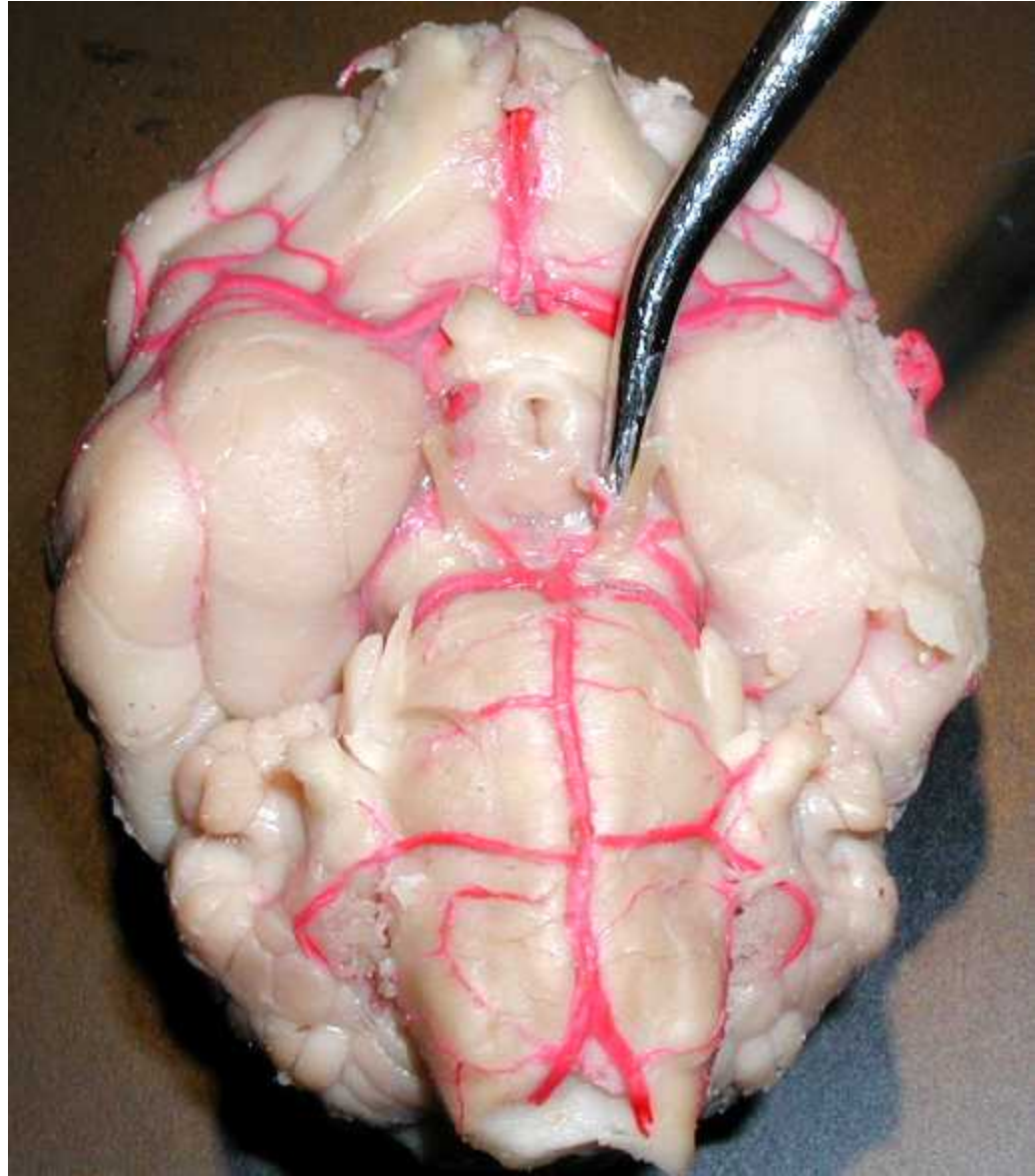
Optic (II)

- sensory
- fibers transmit impulses associated with vision

Cranial Nerves III and IV

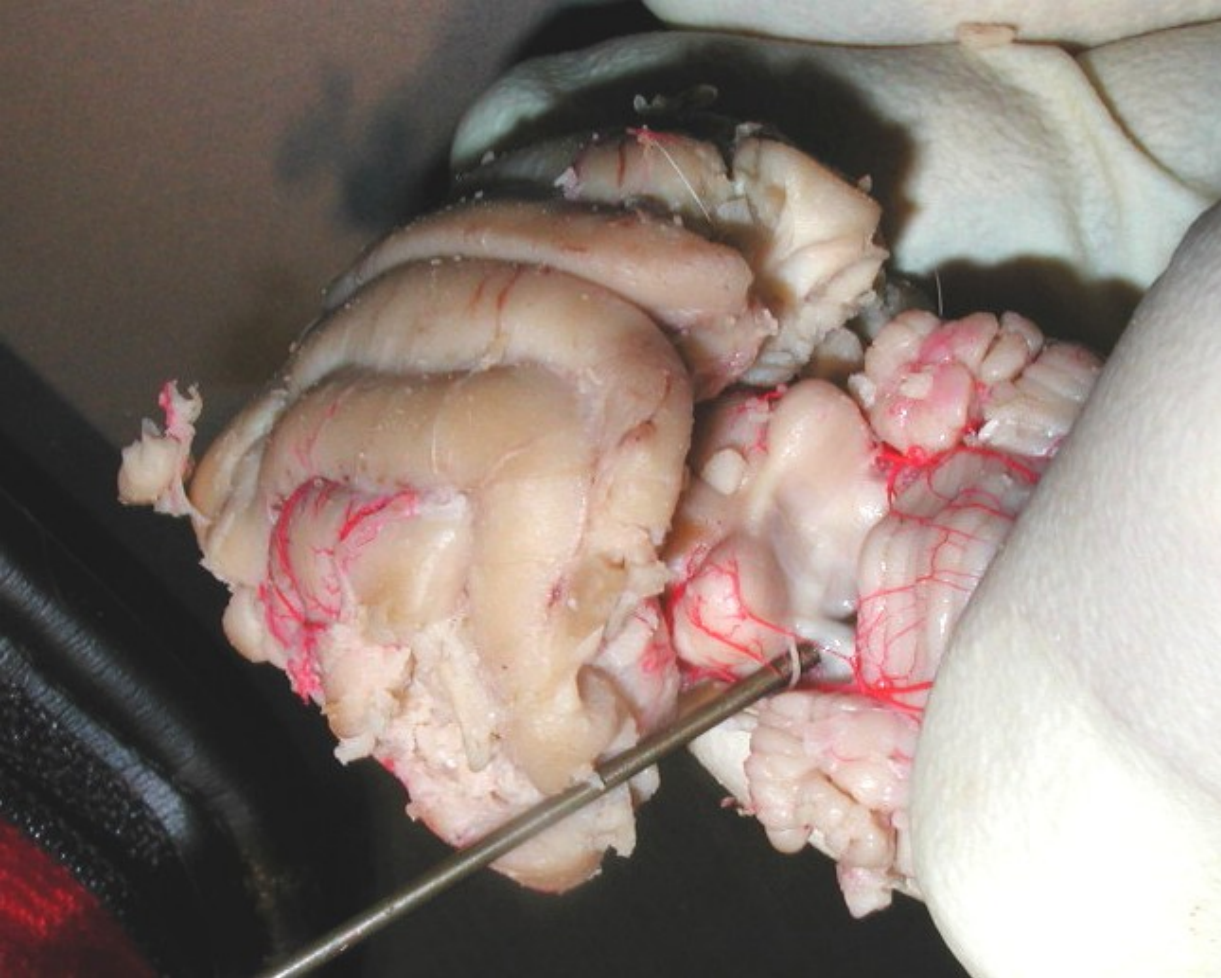
Oculomotor (III)

- some sensory
 - proprioceptors
- primarily motor
- motor impulses to muscles that
 - raise eyelids
 - move the eyes
 - focus lens
 - adjust light entering eye



Cranial Nerves III and IV

- Trochlear (IV)
 - some sensory
 - proprioceptors
 - primarily motor
 - motor impulses to muscles that move the eyes

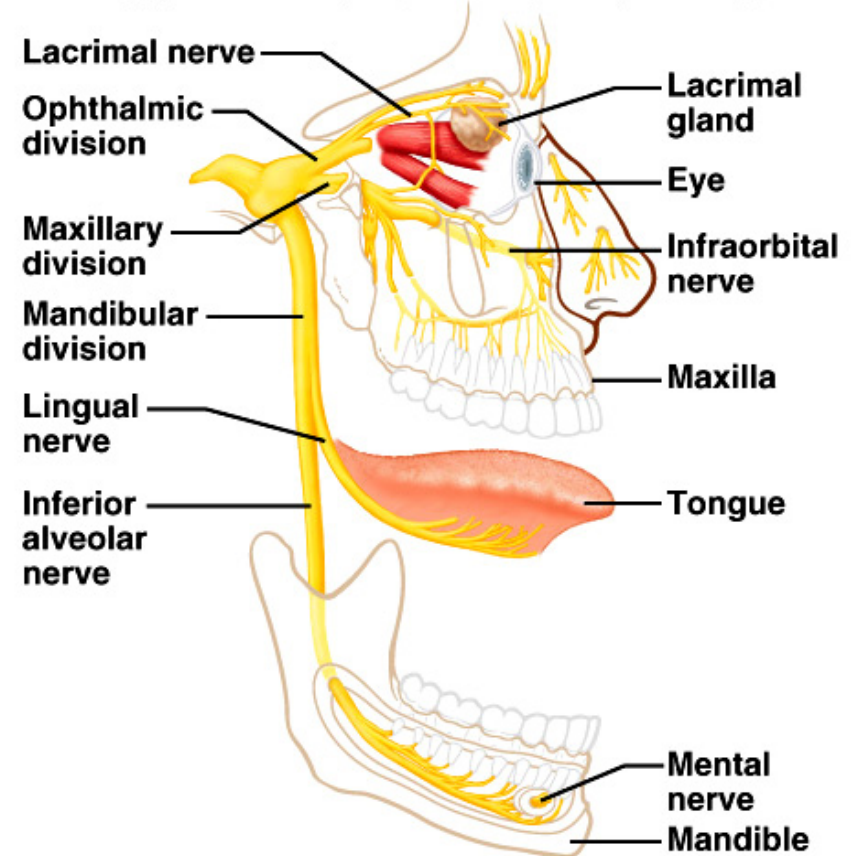


Cranial Nerve V

Copyright © The McGraw-Hill Companies, Inc. Permission required for reproduction or display.

Trigeminal (V)

- mixed
- ophthalmic division
 - sensory from surface of eyes, tear glands, scalp, forehead, and upper eyelids
- maxillary division
 - sensory from upper teeth, upper gum, upper lip, palate, and skin of face
- mandibular division
 - sensory from scalp, skin of jaw, lower teeth, lower gum, and lower lip
 - motor to muscles of mastication and muscles in floor of mouth



Cranial Nerves VI and VII

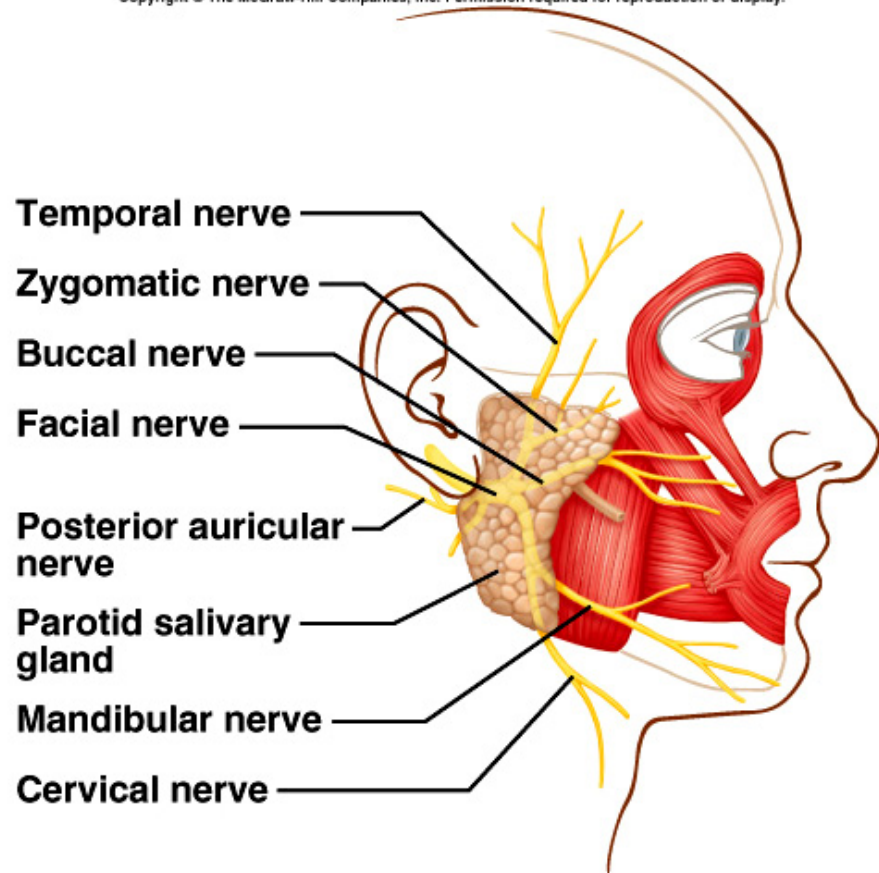
Abducens (VI)

- primarily motor
- motor impulses to muscles that move the eyes
- some sensory with proprioceptors

Facial (VII)

- mixed
- sensory from taste receptors
- motor to muscles of facial expression, tear glands, and salivary glands

Copyright © The McGraw-Hill Companies, Inc. Permission required for reproduction or display.



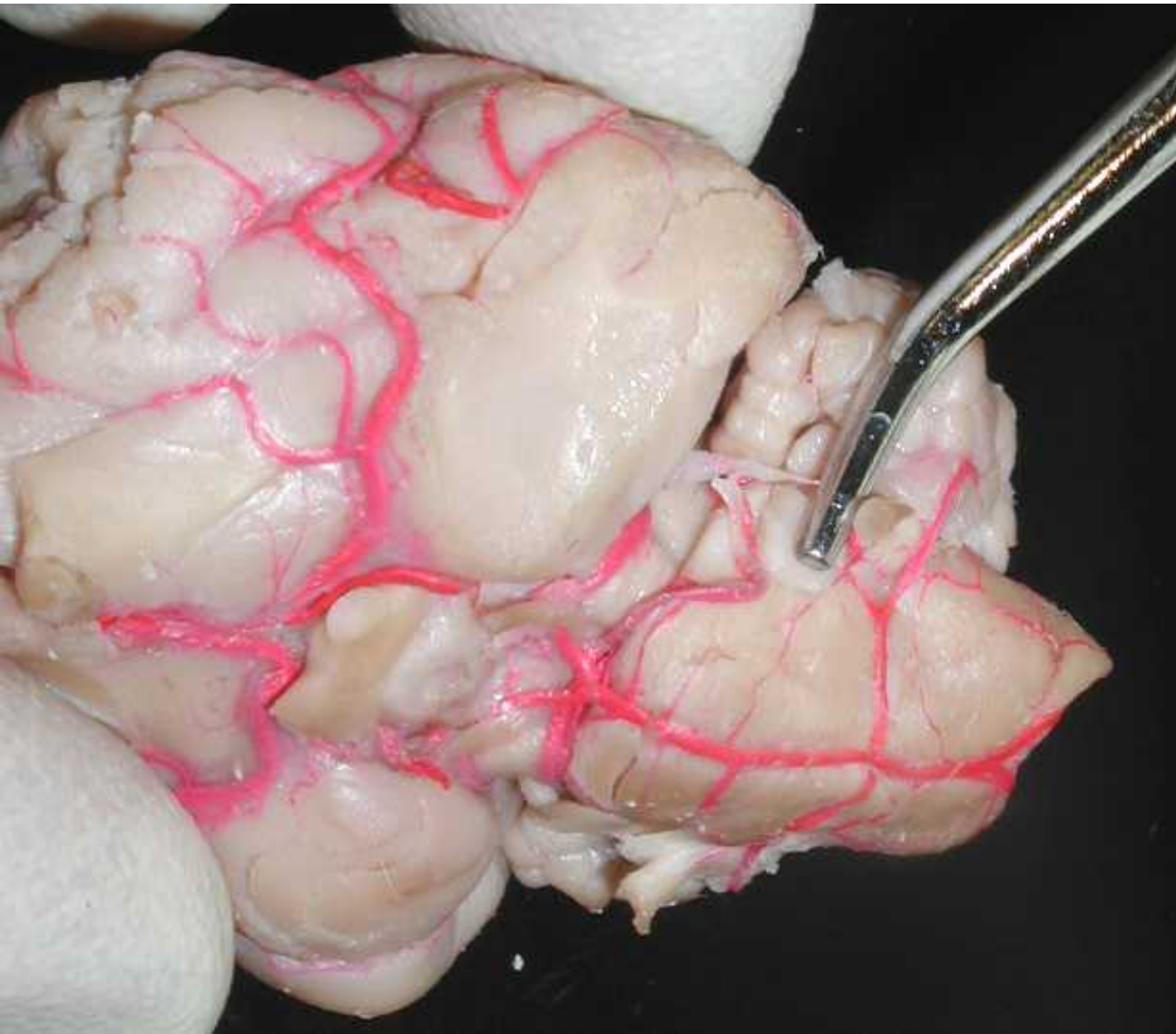
Cranial Nerves VIII and IX

Vestibulocochlear (VIII)

- sensory
- vestibular branch
 - sensory from equilibrium receptors of ear
- cochlear branch
 - sensory from hearing receptors

Glossopharyngeal (IX)

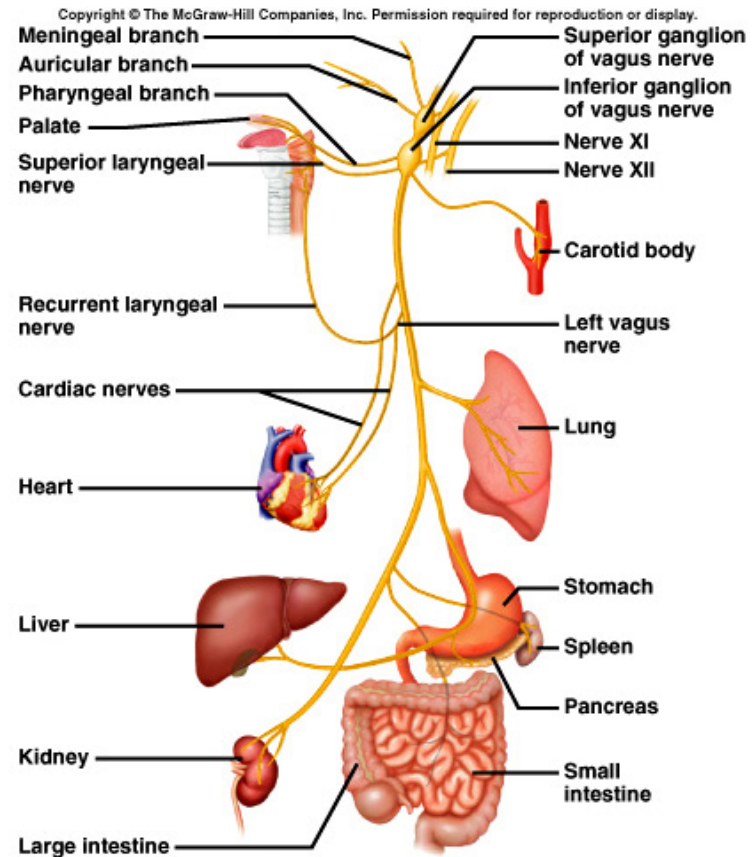
- mixed
- sensory from pharynx, tonsils, tongue, and carotid arteries
- motor to salivary glands and muscles of pharynx



Cranial Nerve X

Vagus (X)

- mixed
- somatic motor to muscles of speech and swallowing
- autonomic motor to viscera of thorax and abdomen
- sensory from pharynx, larynx, esophagus, and viscera of thorax and abdomen



Cranial Nerves XI and XII

Accessory (XI)

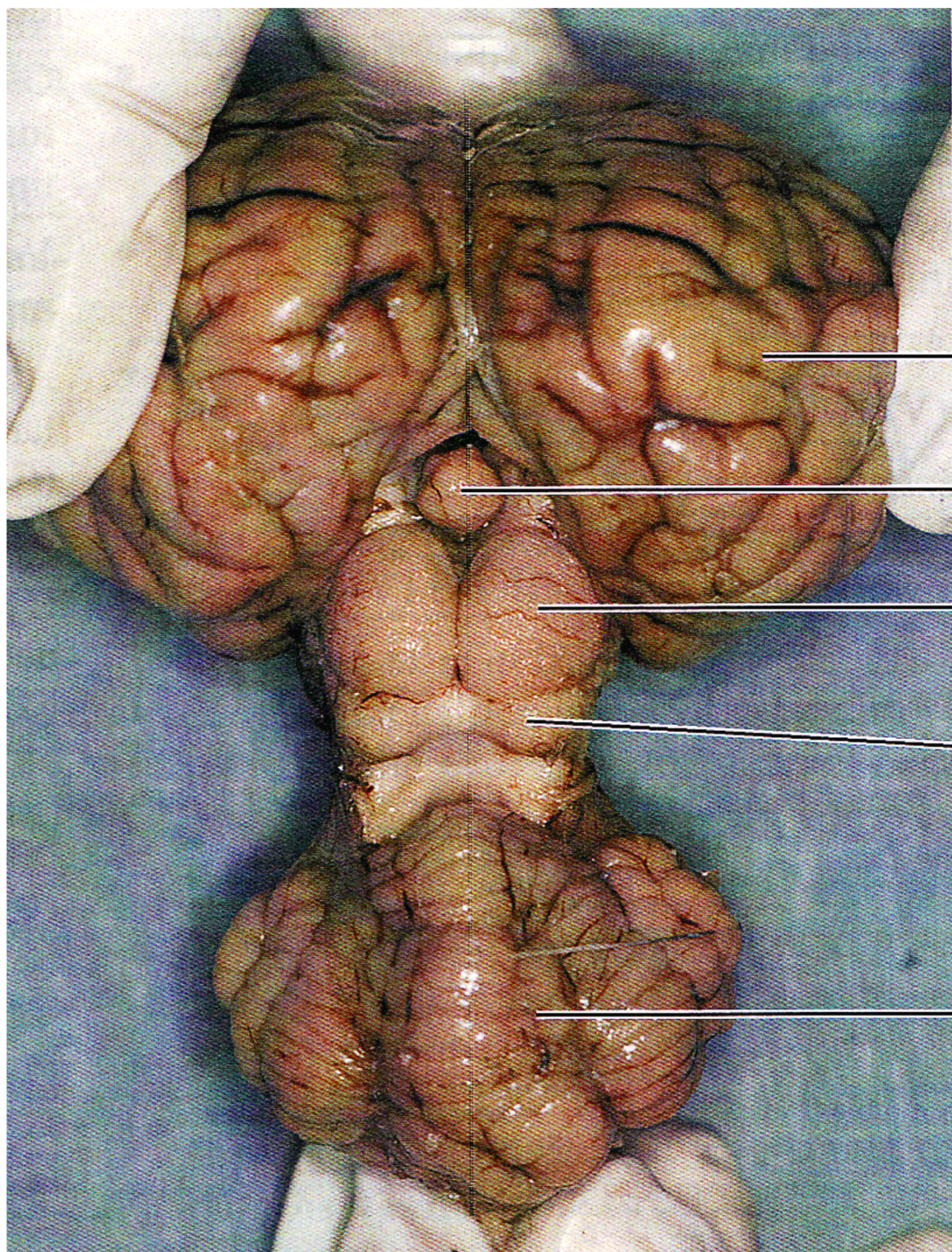
- primarily motor
- cranial branch
 - motor to muscles of soft palate, pharynx, and larynx
- spinal branch
 - motor to muscles of neck, and back; some proprioceptor

Hypoglossal (XII)

- primarily motor
- motor to muscles of the tongue; some proprioceptor

CRANIAL NERVES





Occipital lobe of cerebral hemisphere

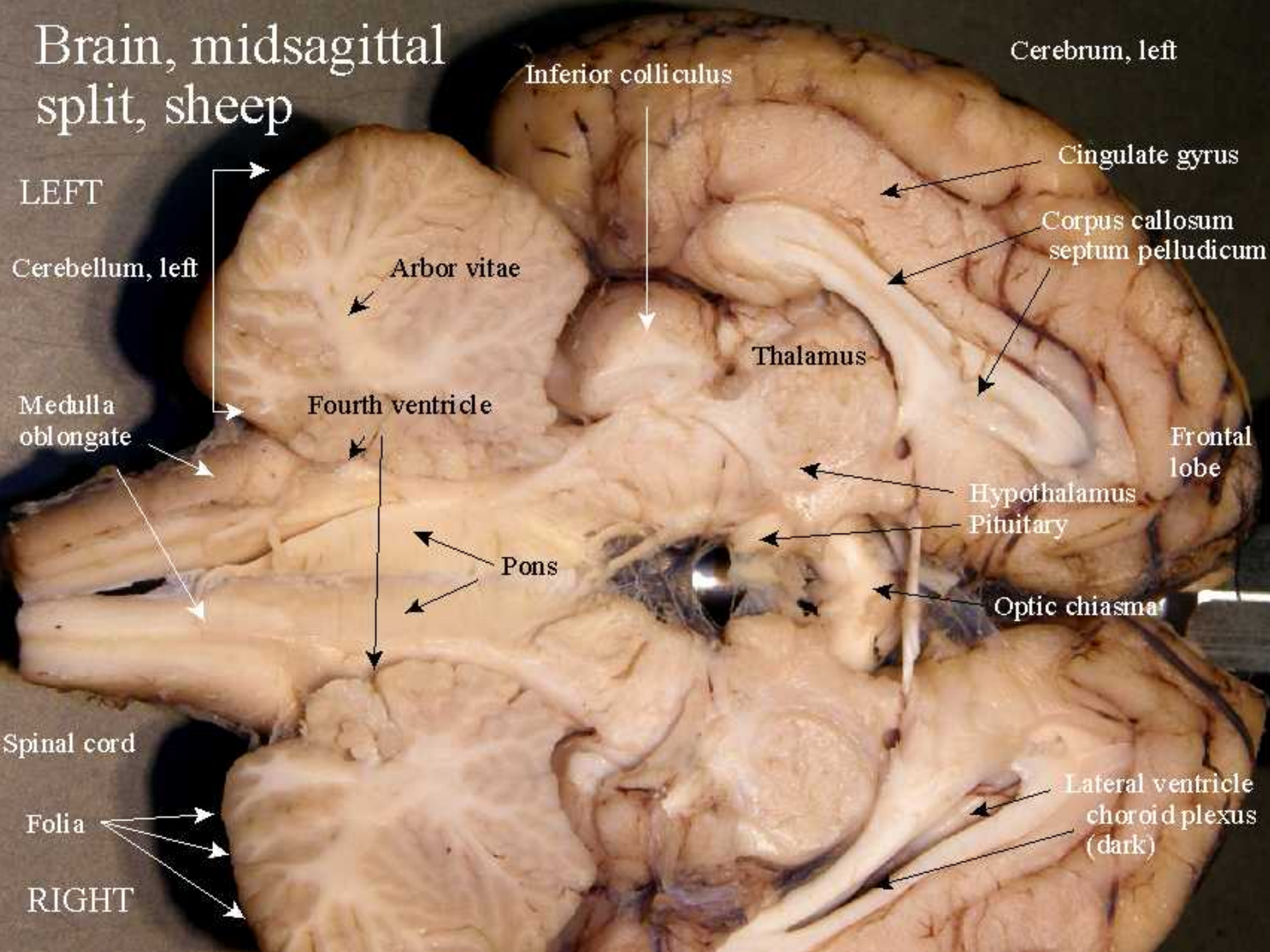
Pineal body

Superior colliculi of corpora quadrigemina

Inferior colliculi of corpora quadrigemina

Cerebellum

Brain, midsagittal split, sheep



Cerebrum, left

Inferior colliculus

Cingulate gyrus

LEFT

Cerebellum, left

Arbor vitae

Corpus callosum
septum pellucidum

Thalamus

Medulla
oblongata

Fourth ventricle

Frontal
lobe

Hypothalamus
Pituitary

Pons

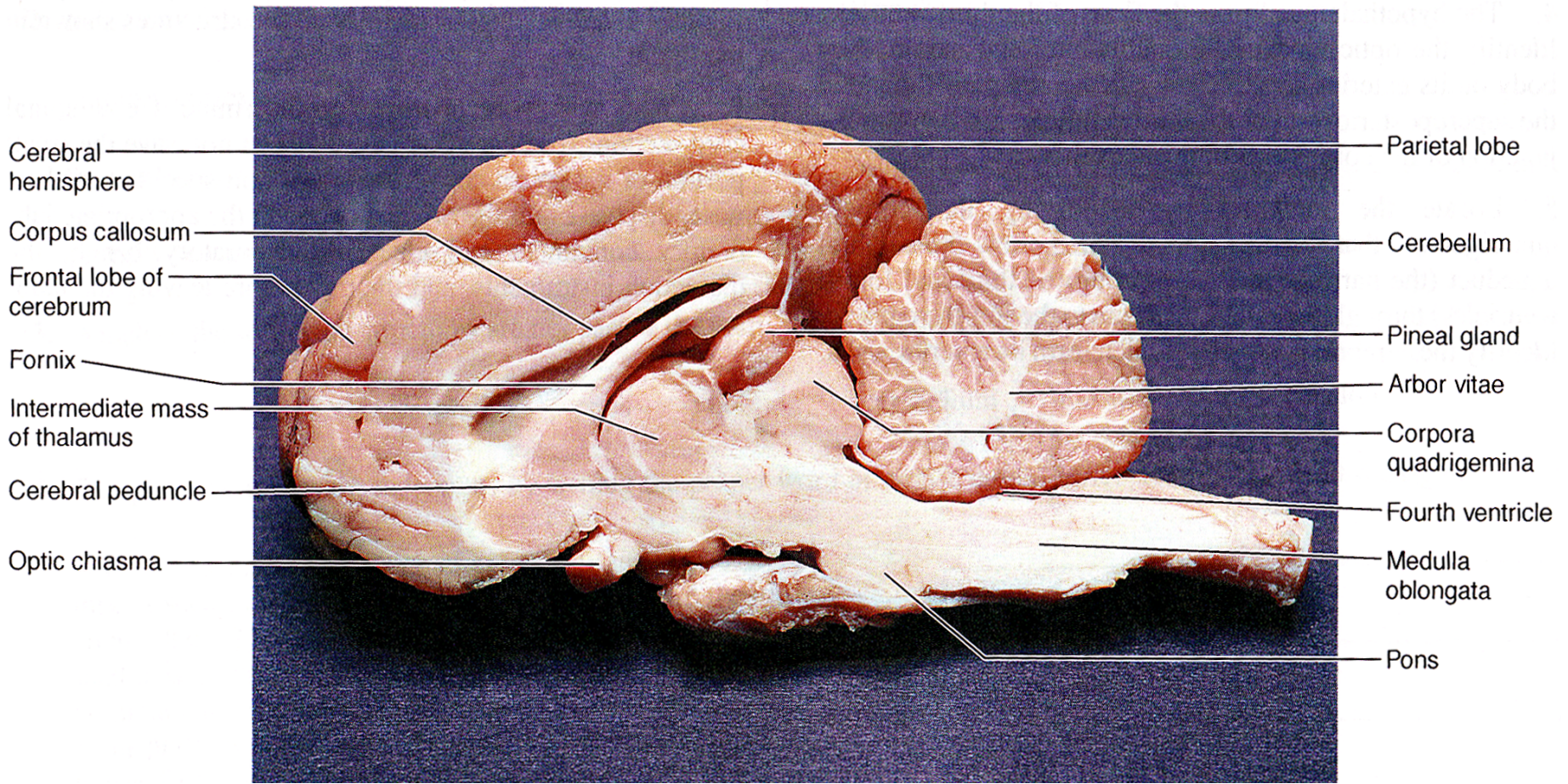
Optic chiasma

Spinal cord

Folia

Lateral ventricle
choroid plexus
(dark)

RIGHT



Cerebral hemisphere

Corpus callosum

Frontal lobe of cerebrum

Fornix

Intermediate mass of thalamus

Cerebral peduncle

Optic chiasma

Parietal lobe

Cerebellum

Pineal gland

Arbor vitae

Corpora quadrigemina

Fourth ventricle

Medulla oblongata

Pons

