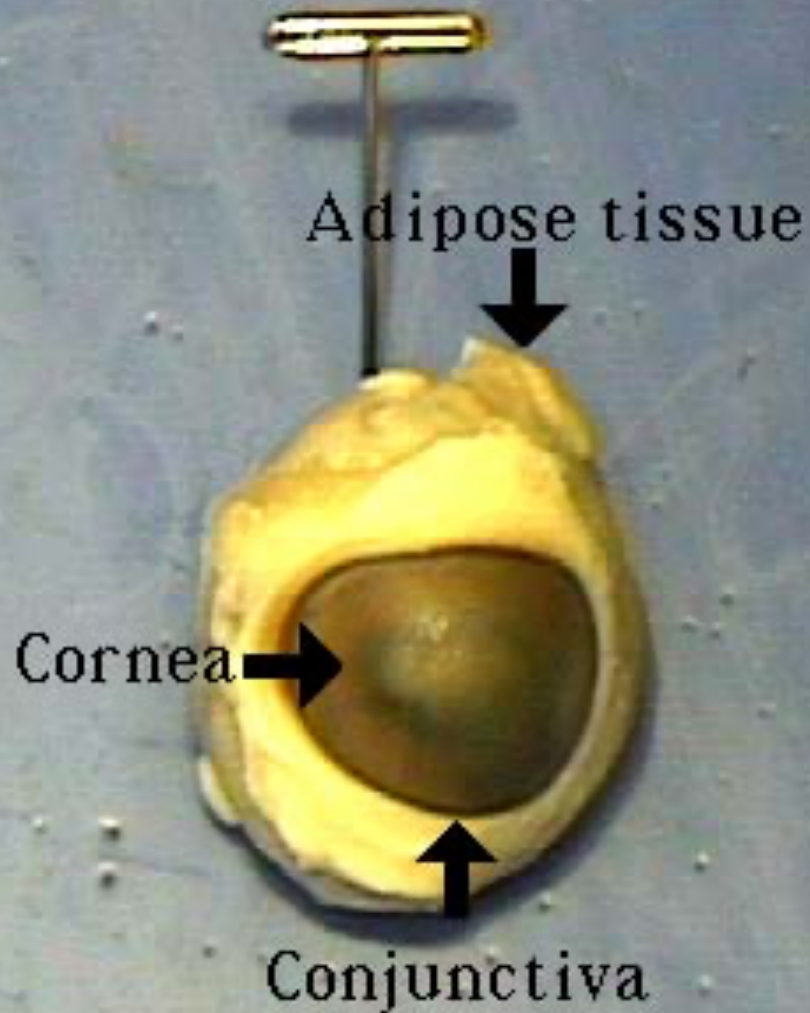
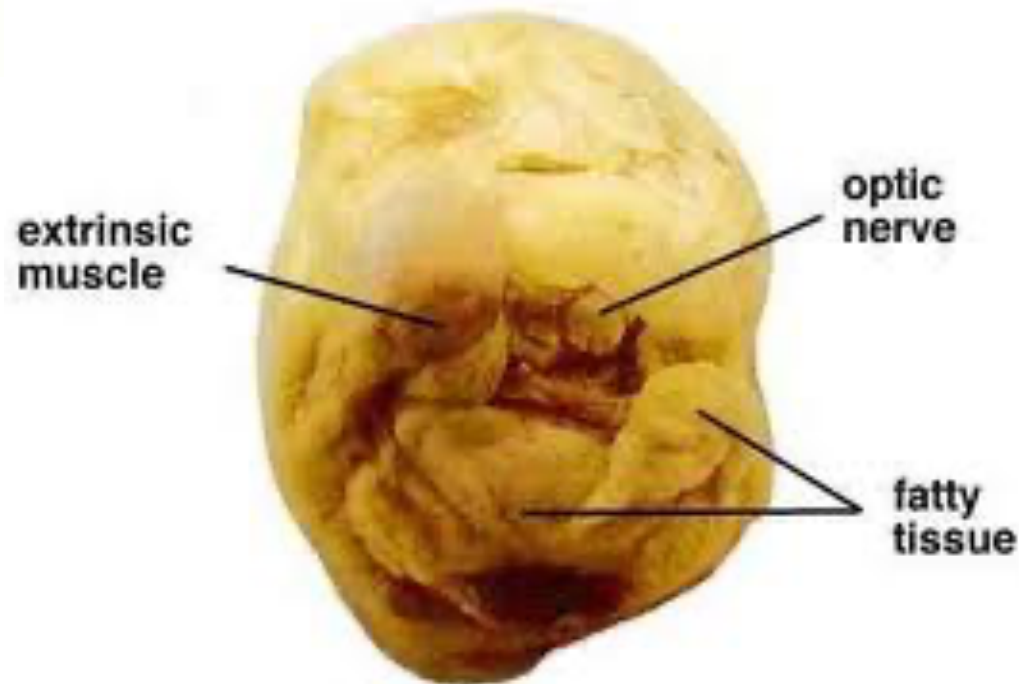
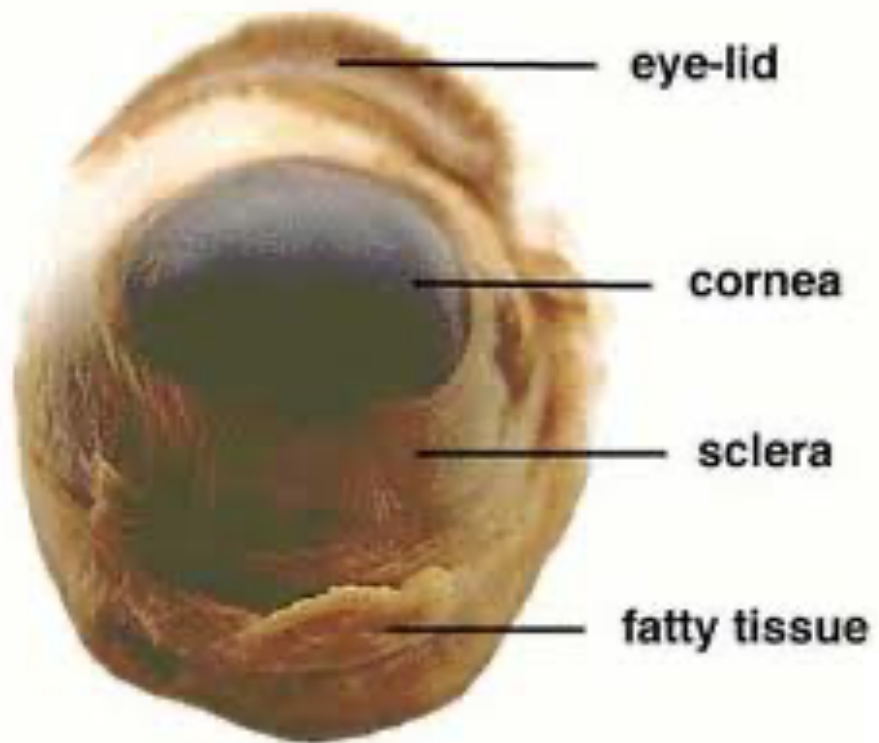
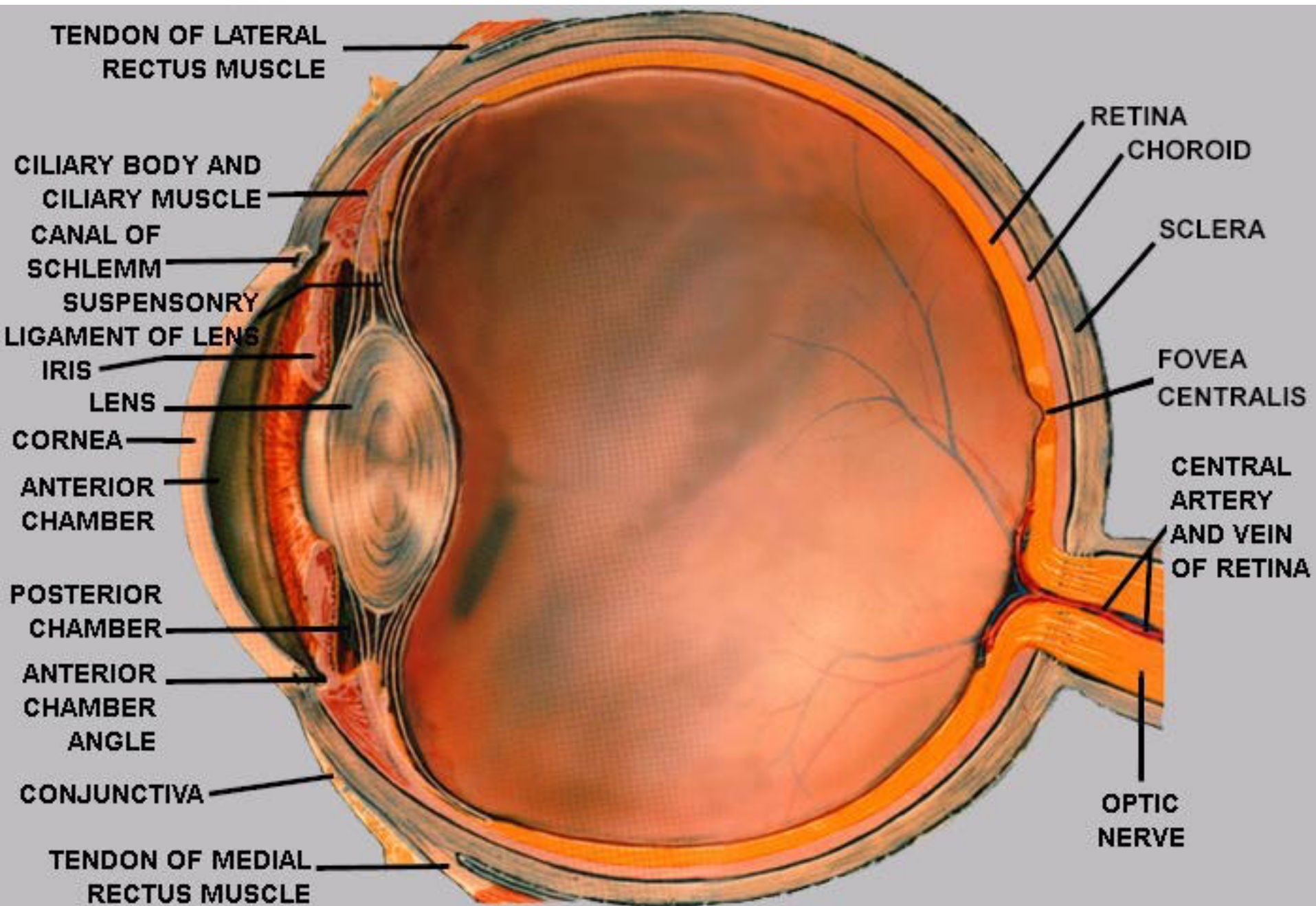


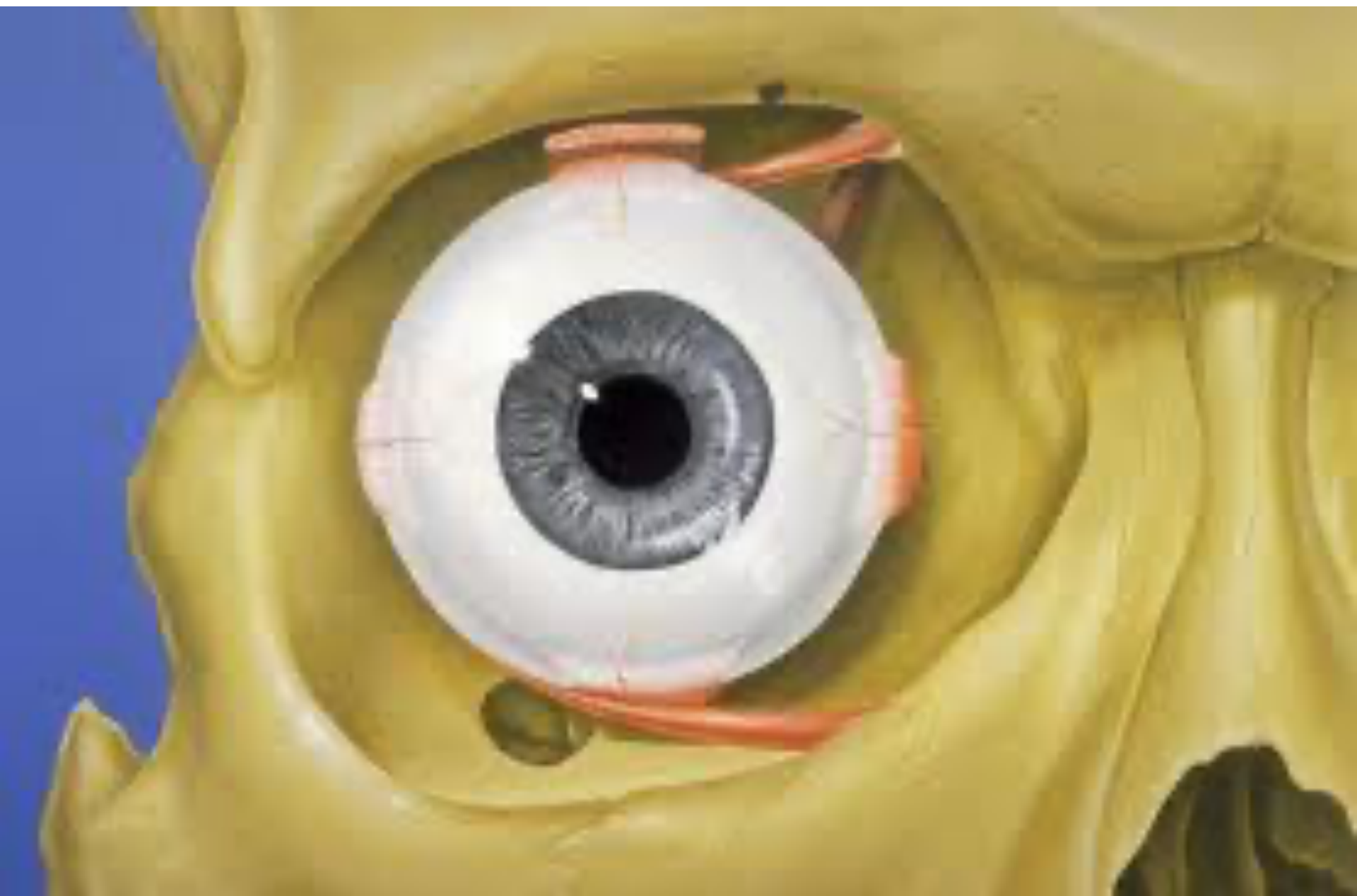
Lab 3

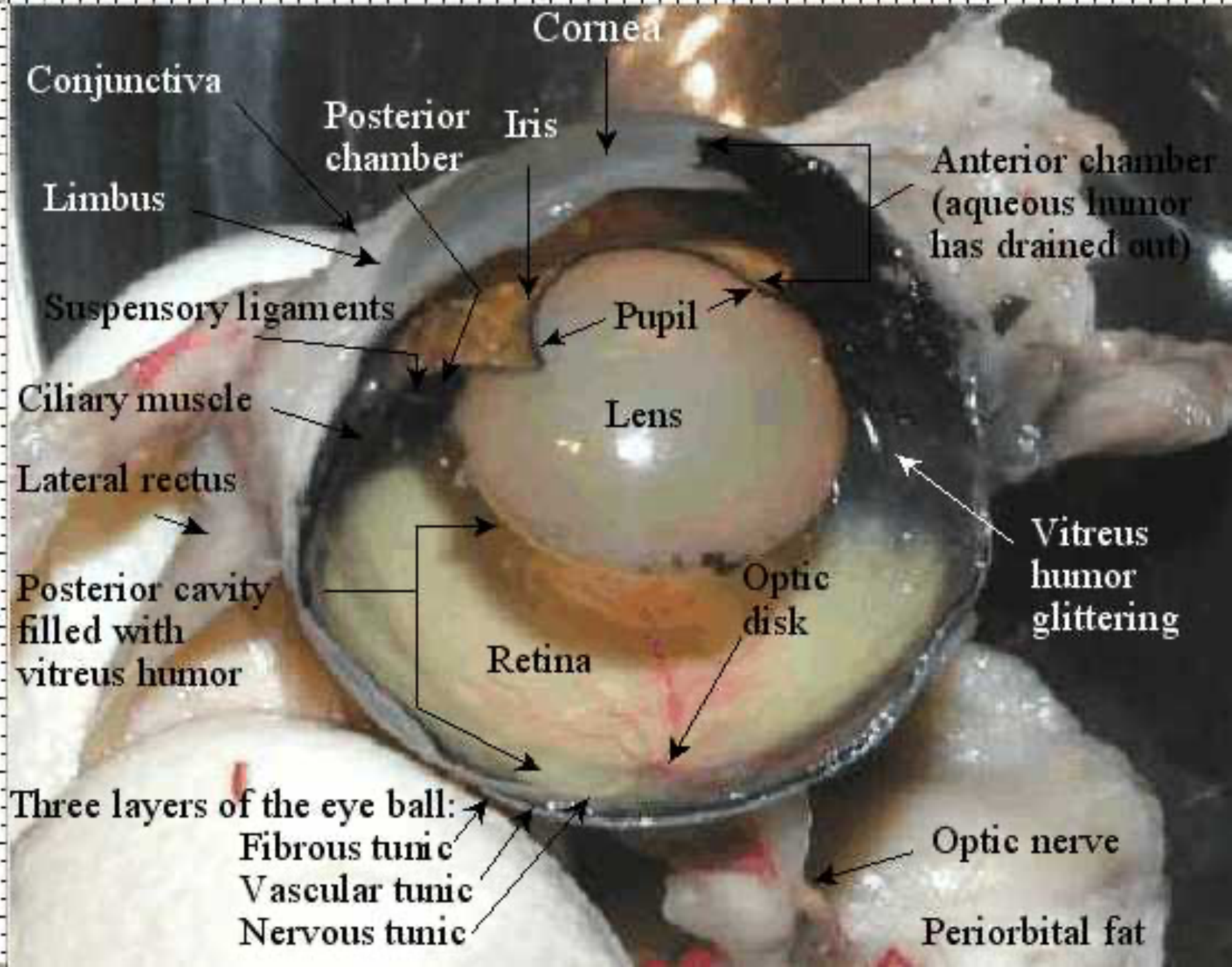
COW'S EYE (Anterior view)











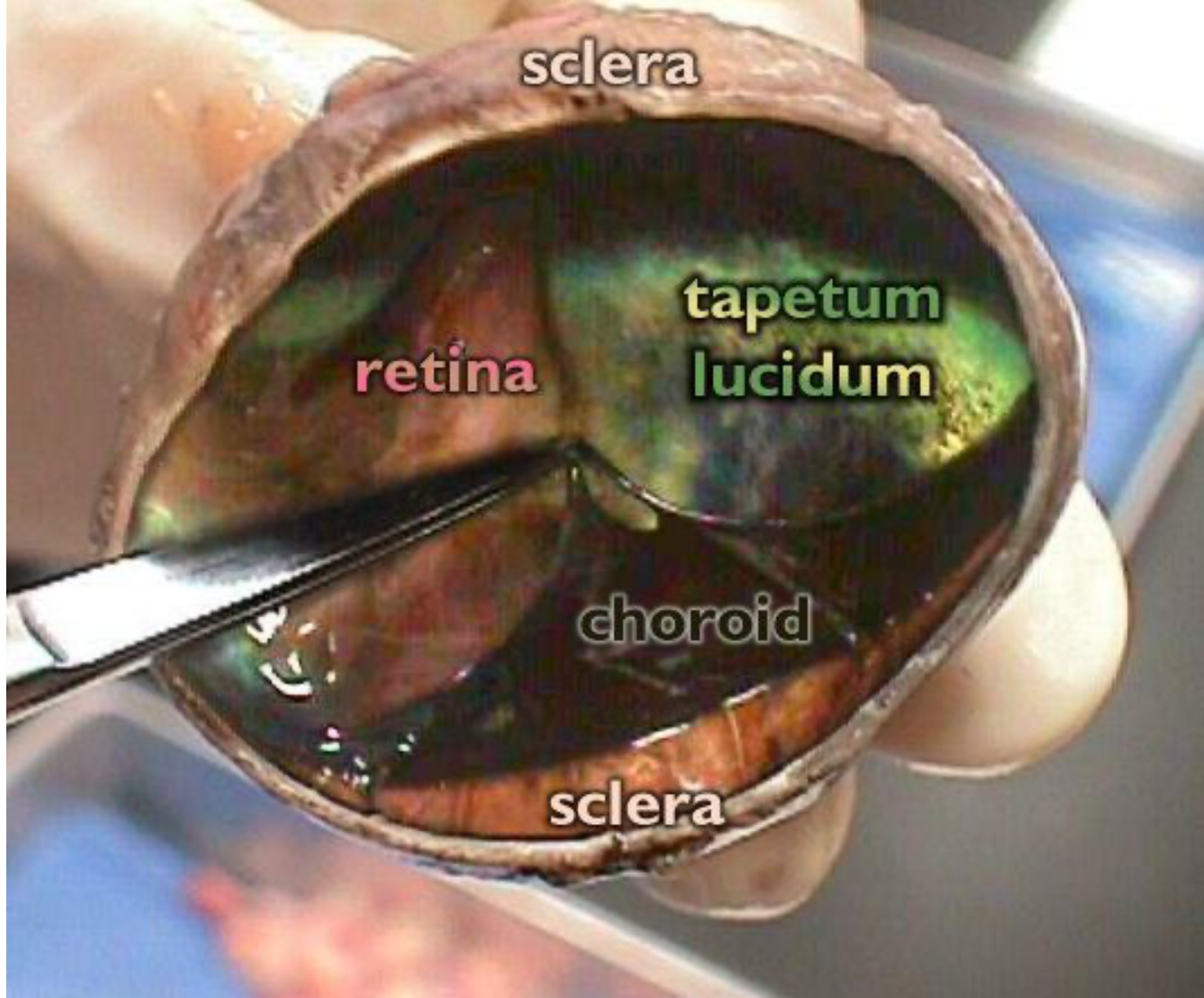
sclera

retina

tapetum
lucidum

choroid

sclera



Adipose (fatty)
cushion

(a)

Cornea

Sclera

Optic nerve

Extrinsic muscle
attachments

(b)

Ciliary body

Lens

(c)

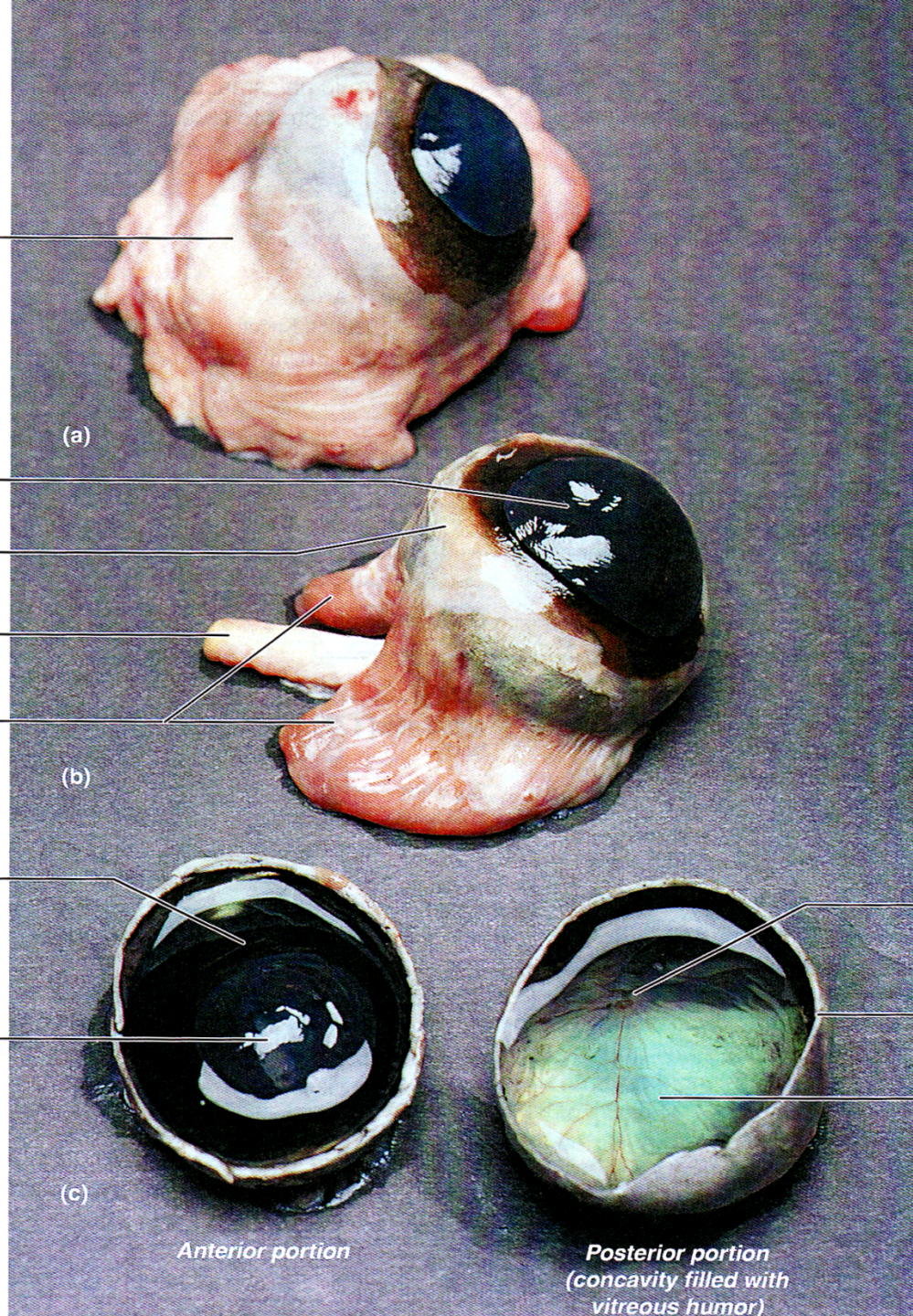
Anterior portion

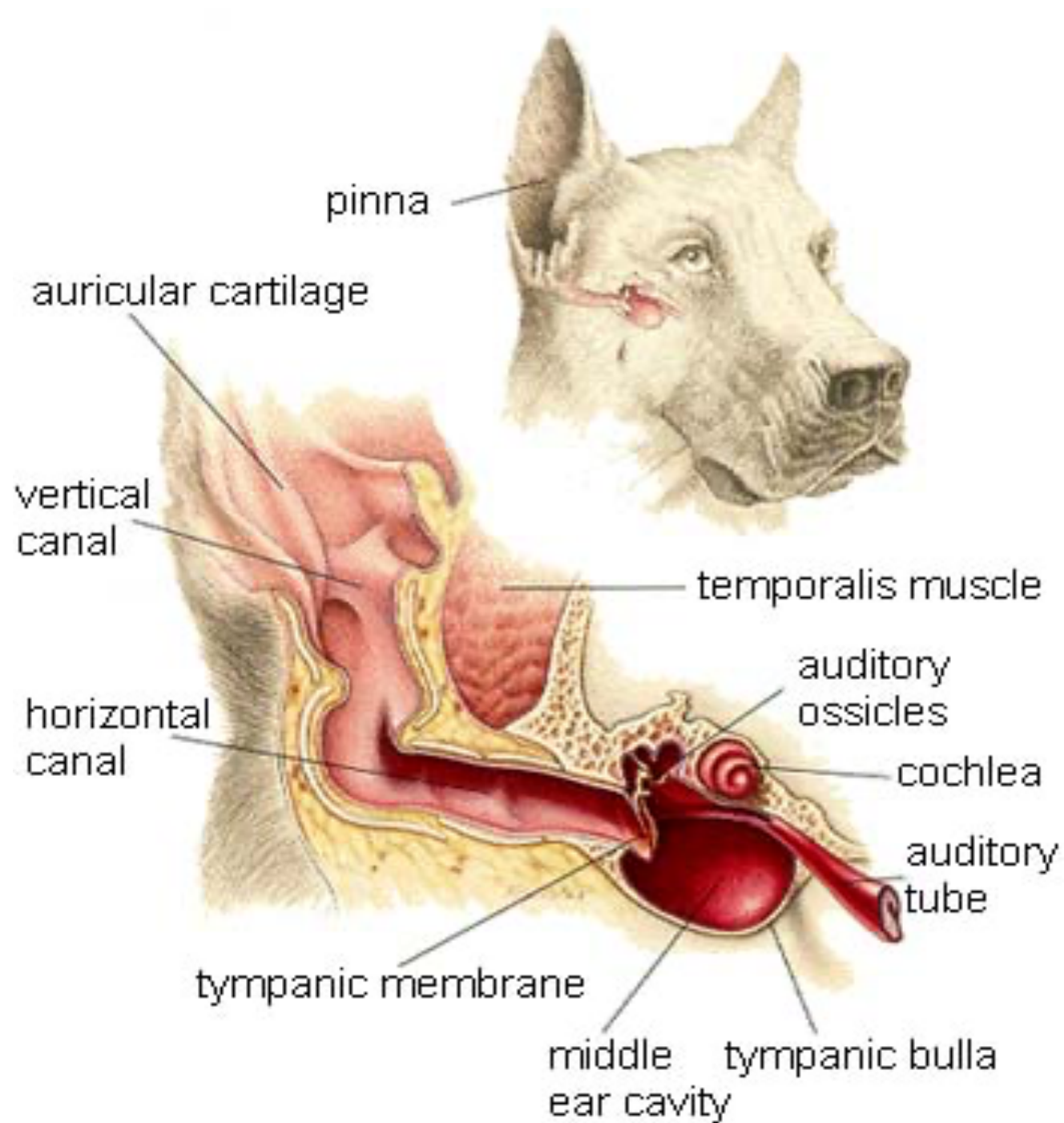
Optic disc

Sclera

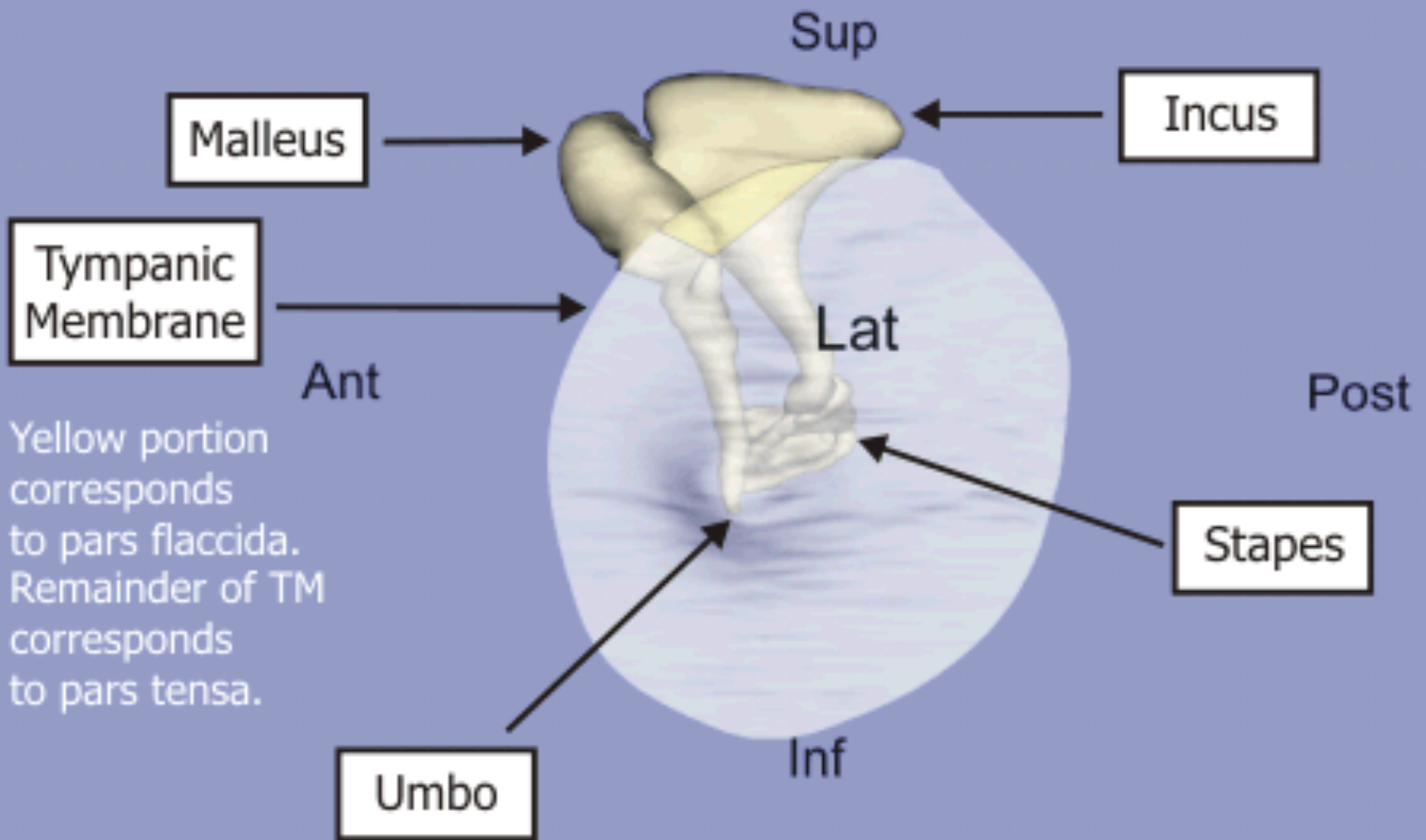
Retina (delicate white
membrane overlying
the darkly pigmented
choroid coat)

*Posterior portion
(concavity filled with
vitreous humor)*



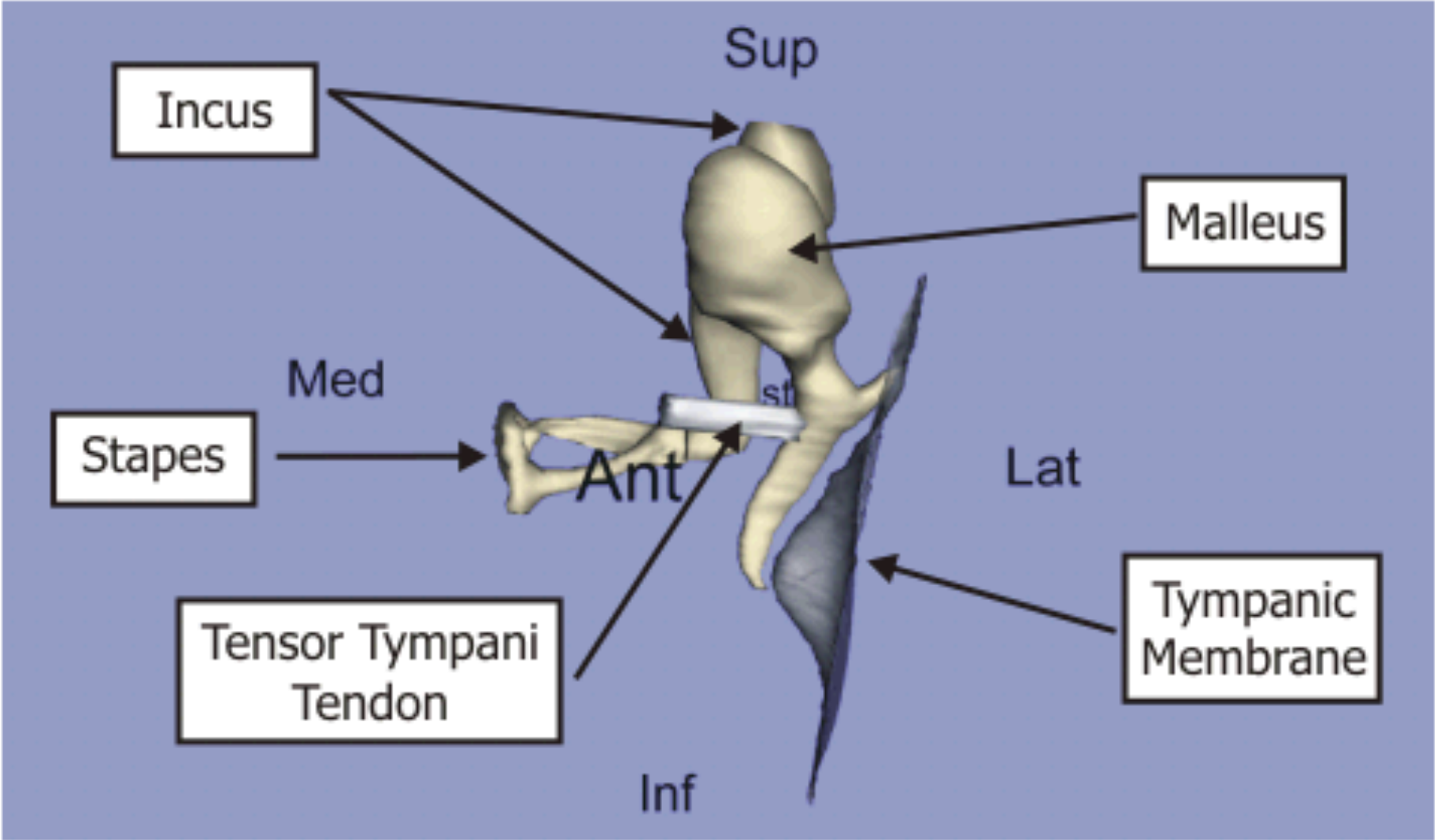


Left Ear



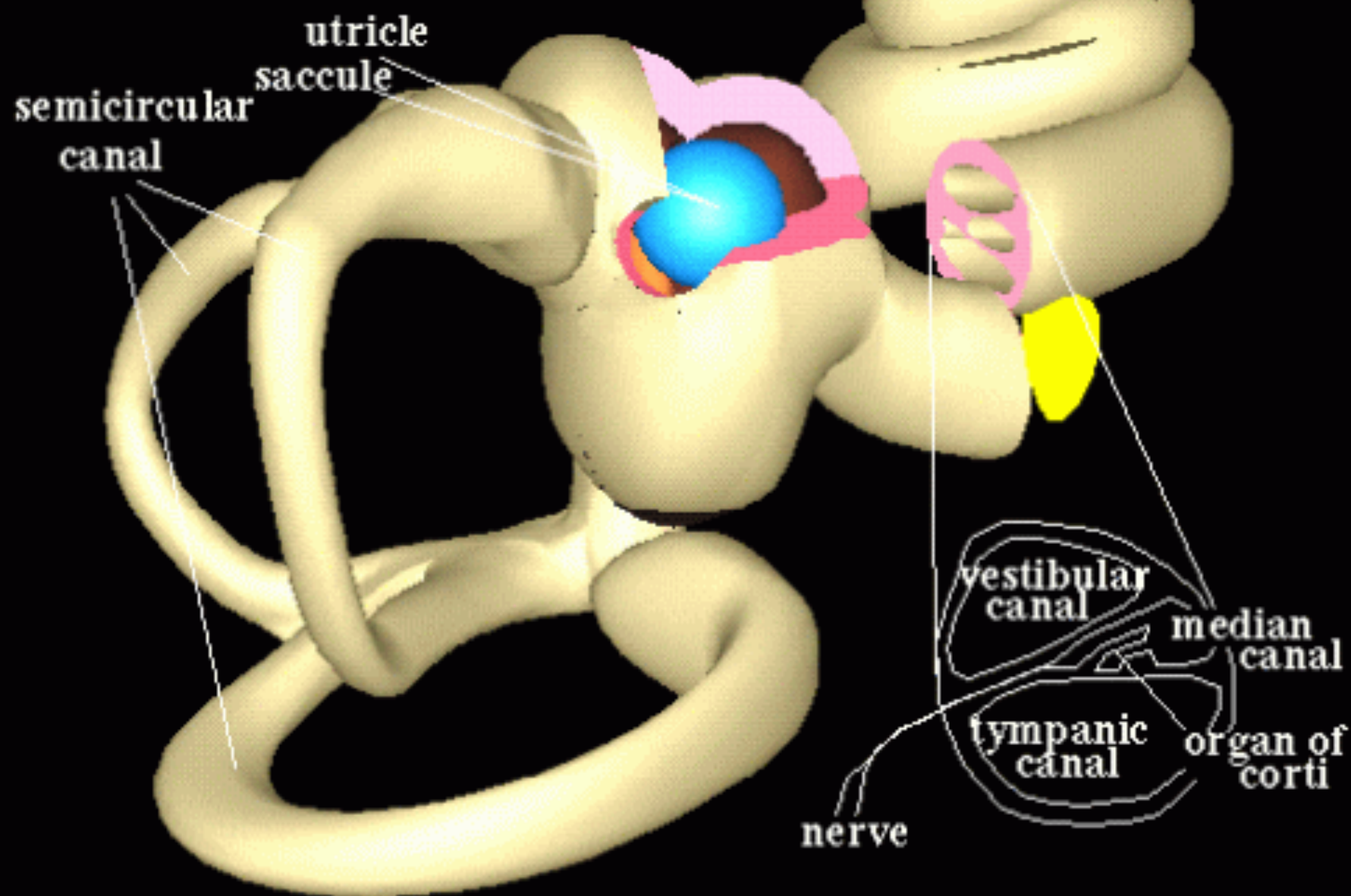
Lateral View

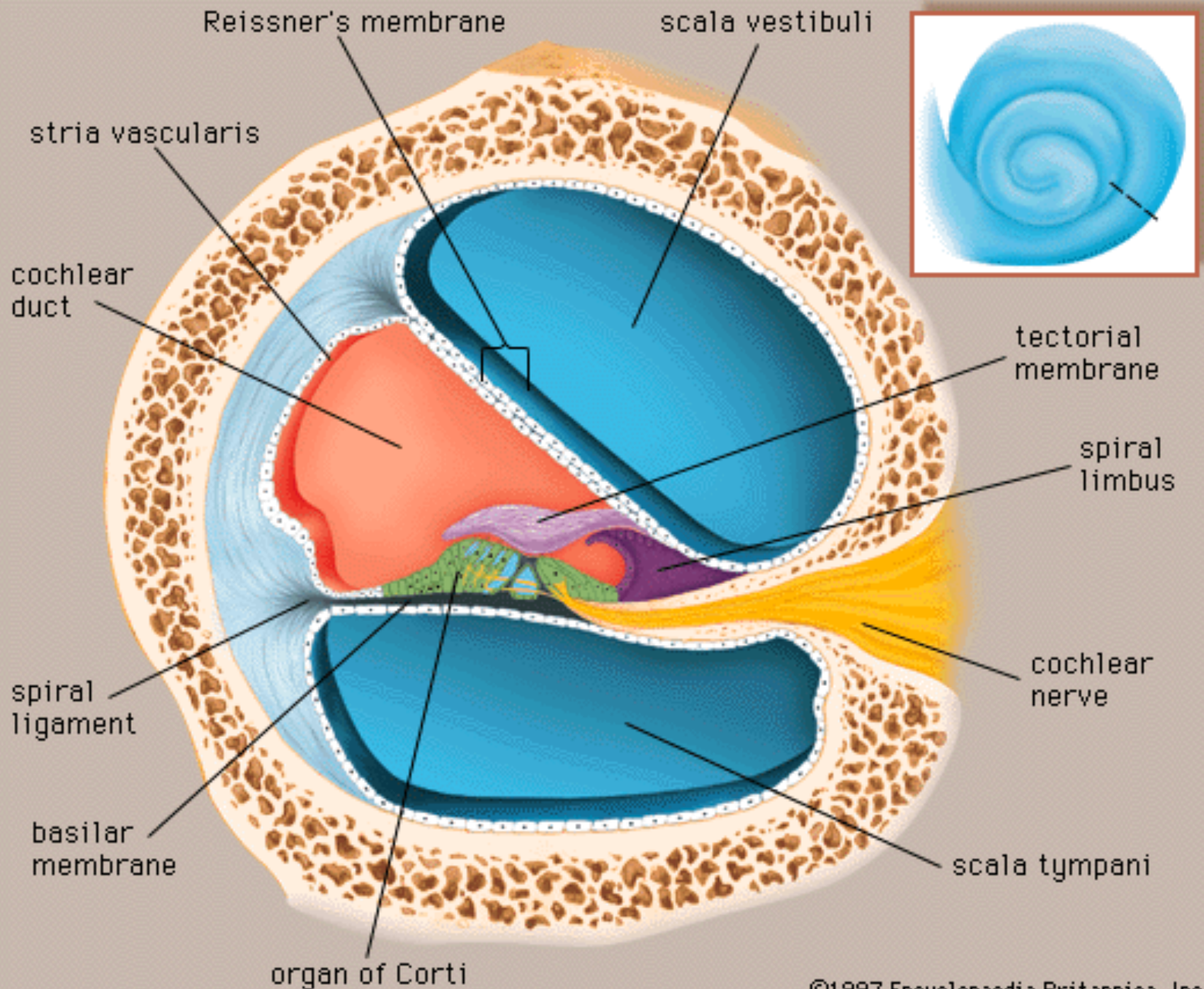
Left Ear

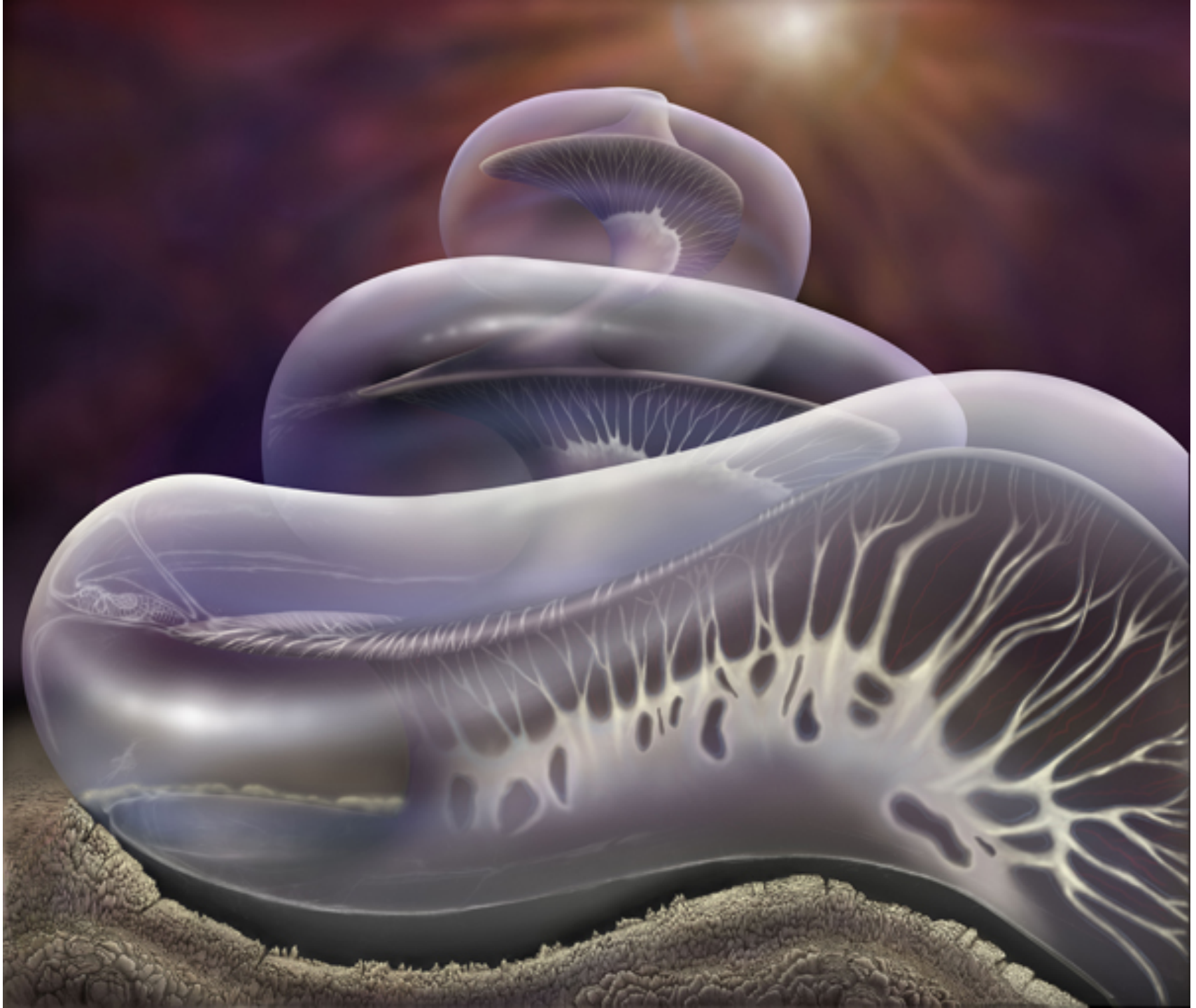


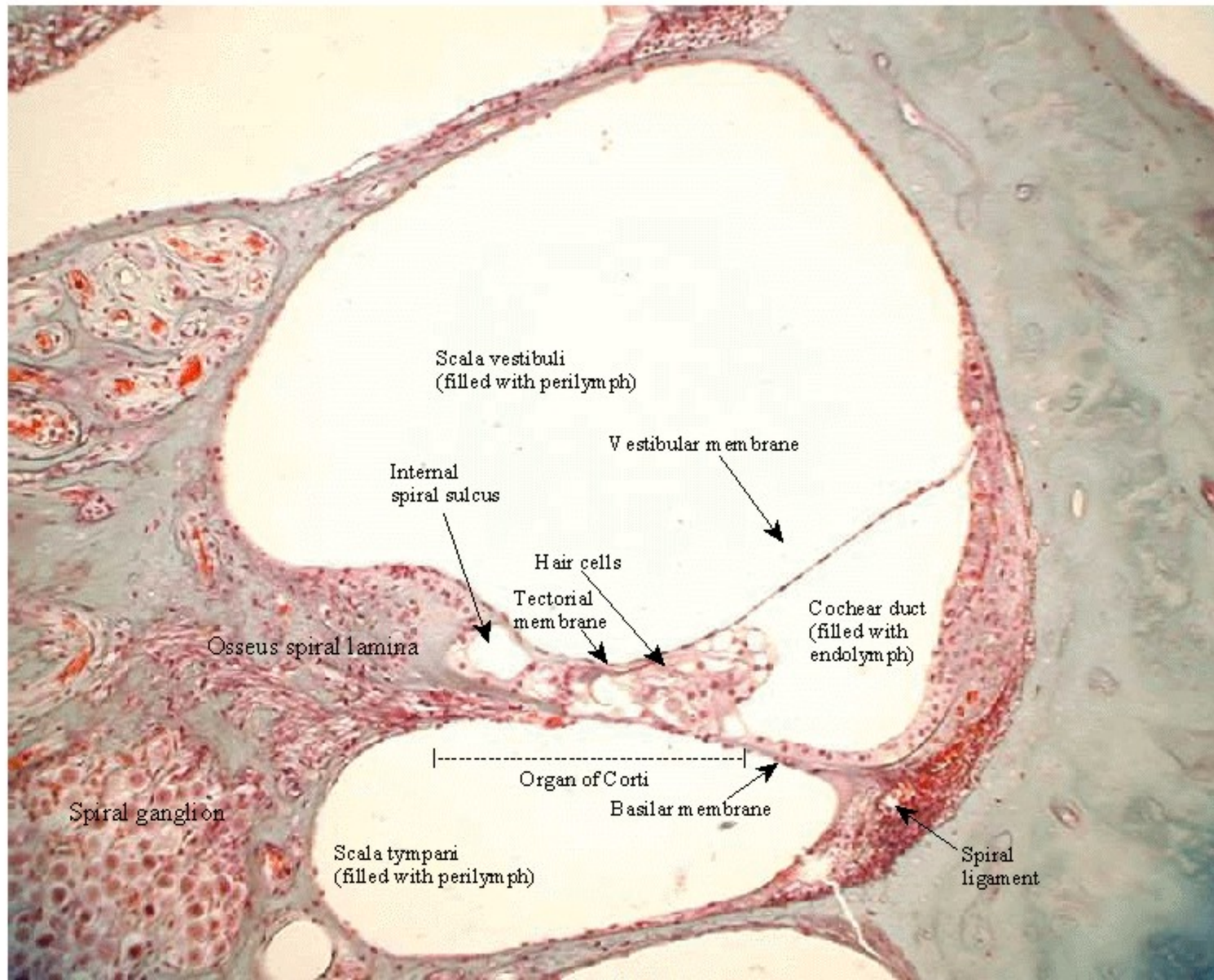
Anterior View

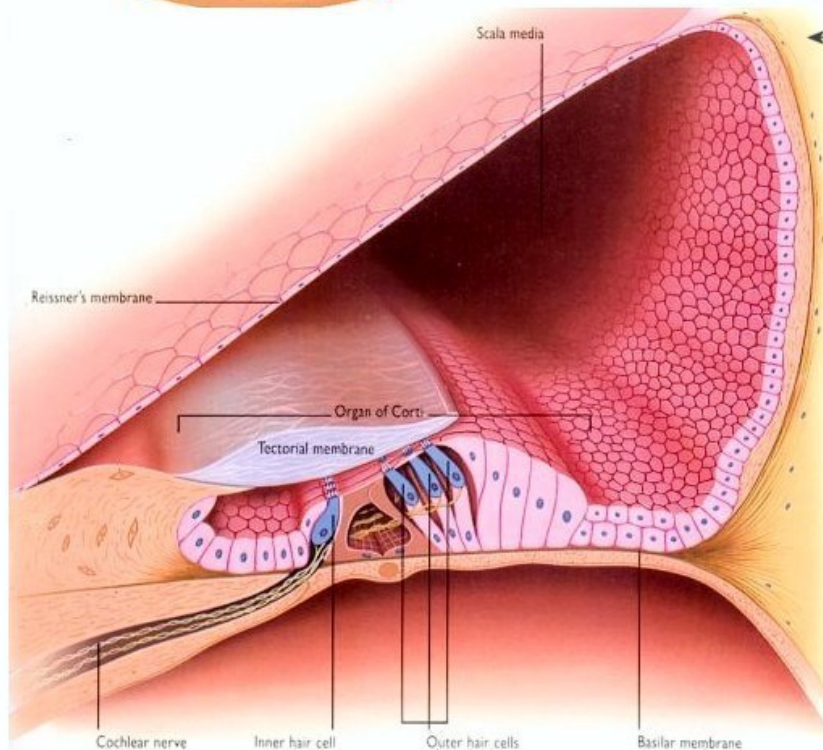
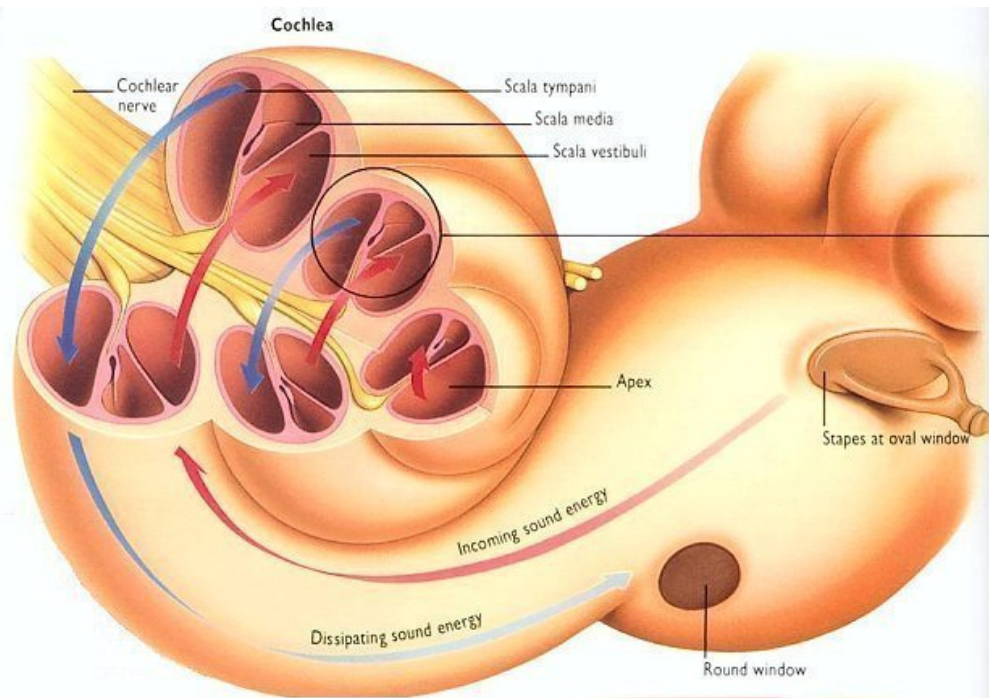
Structure of Inner Ear

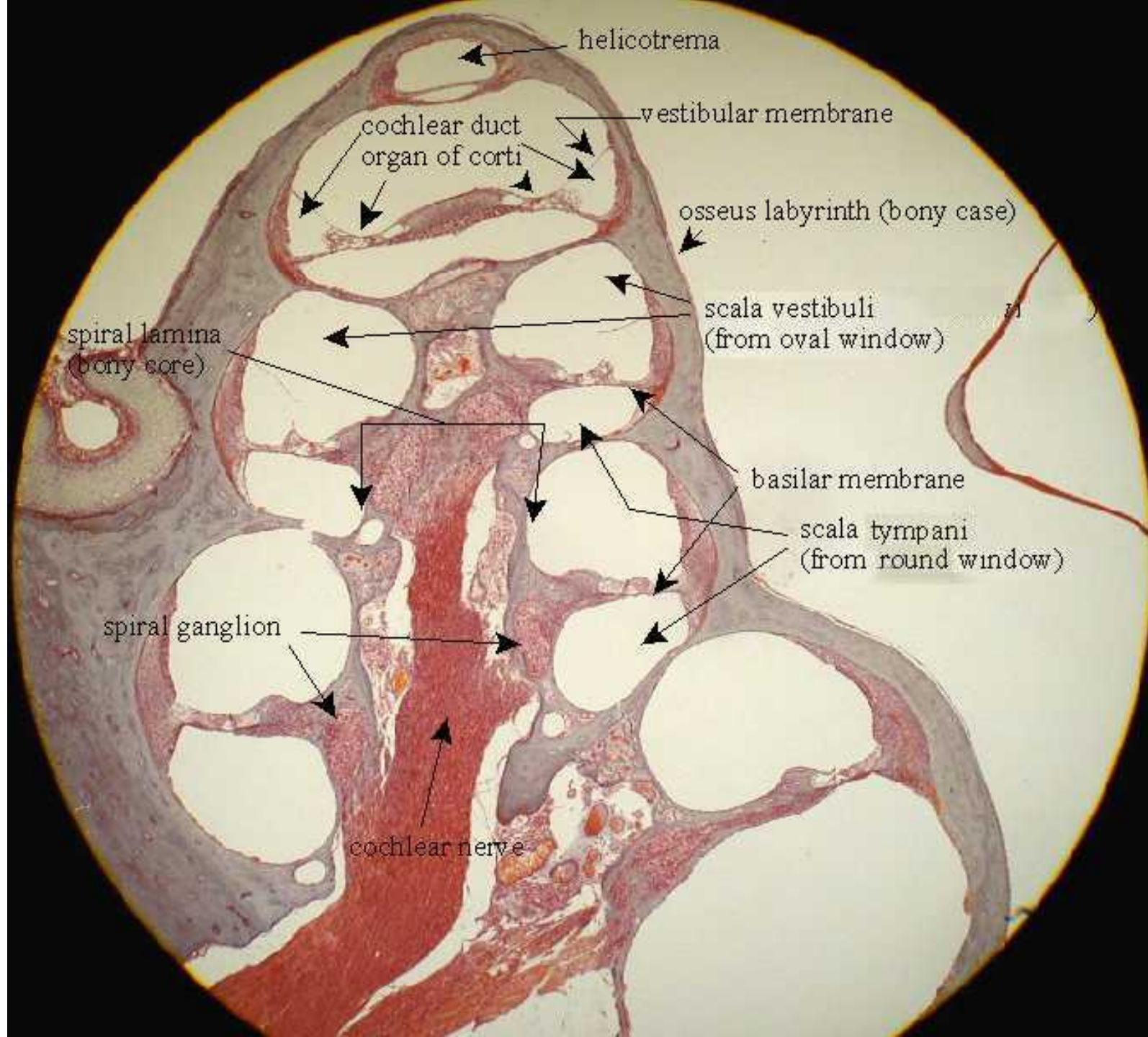












helicotrema

cochlear duct
organ of corti

vestibular membrane

osseus labyrinth (bony case)

spiral lamina
(bony core)

scala vestibuli
(from oval window)

basilar membrane

scala tympani
(from round window)

spiral ganglion

cochlear nerve