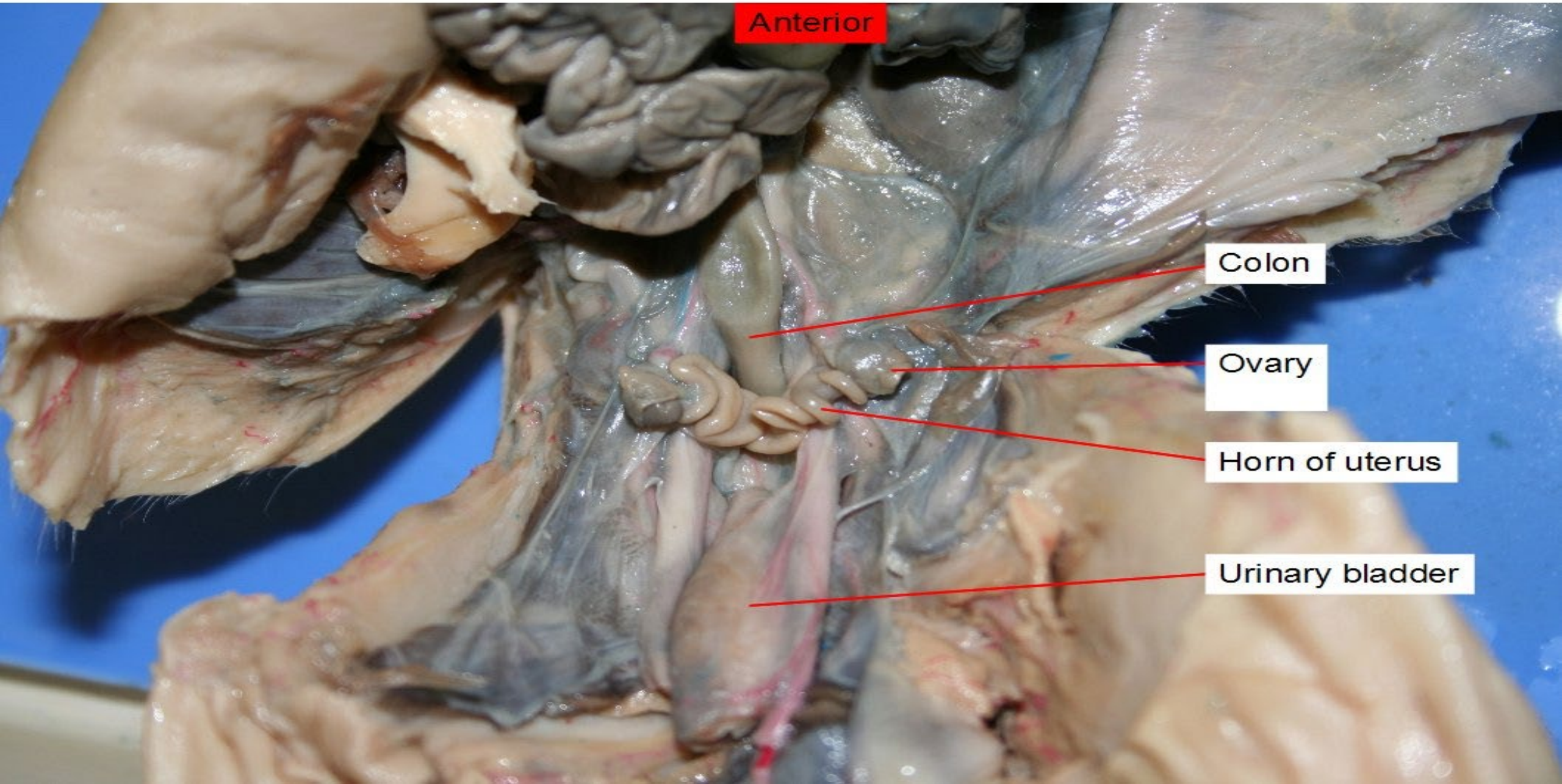


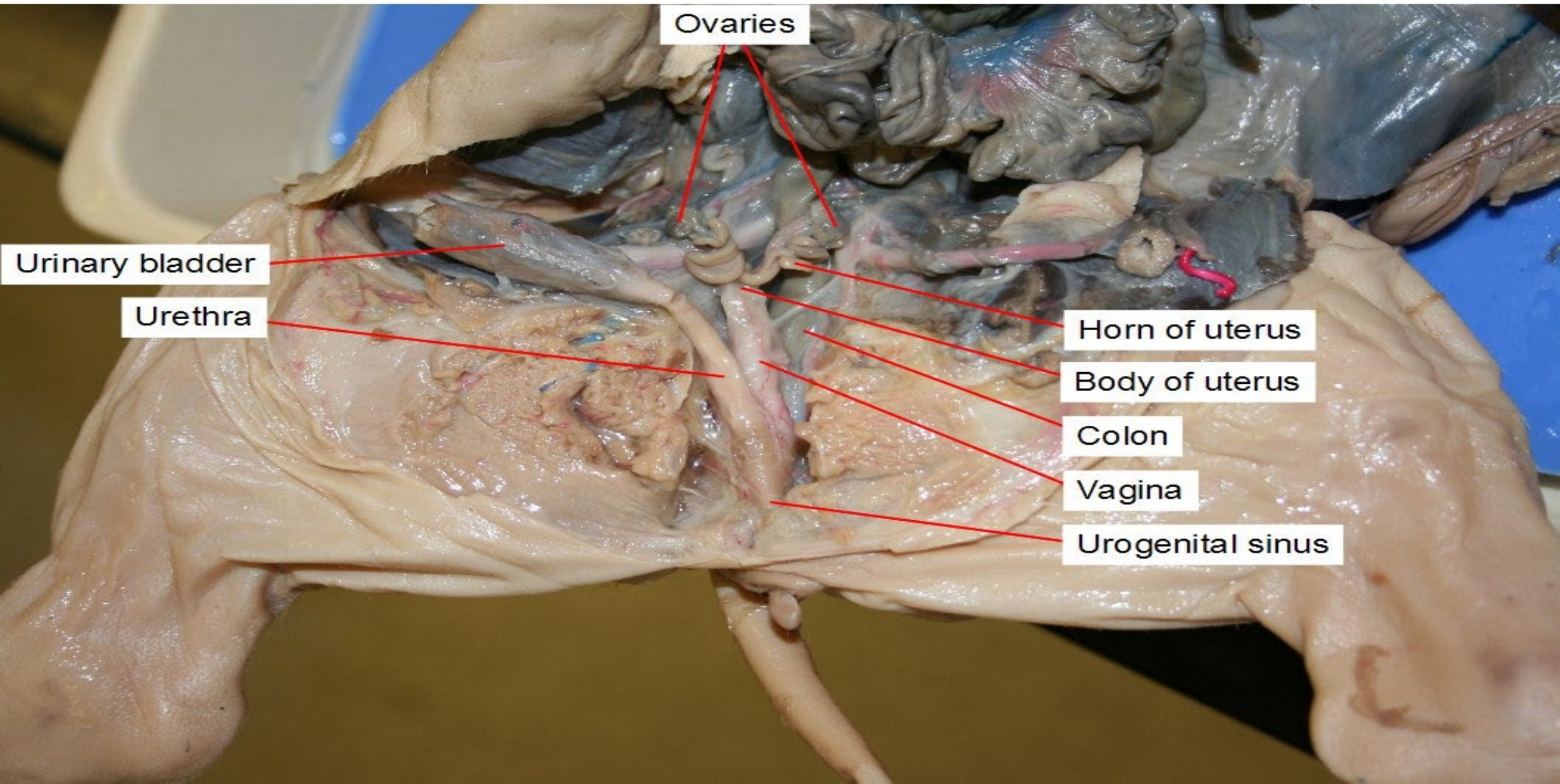
Reproductive System

Female

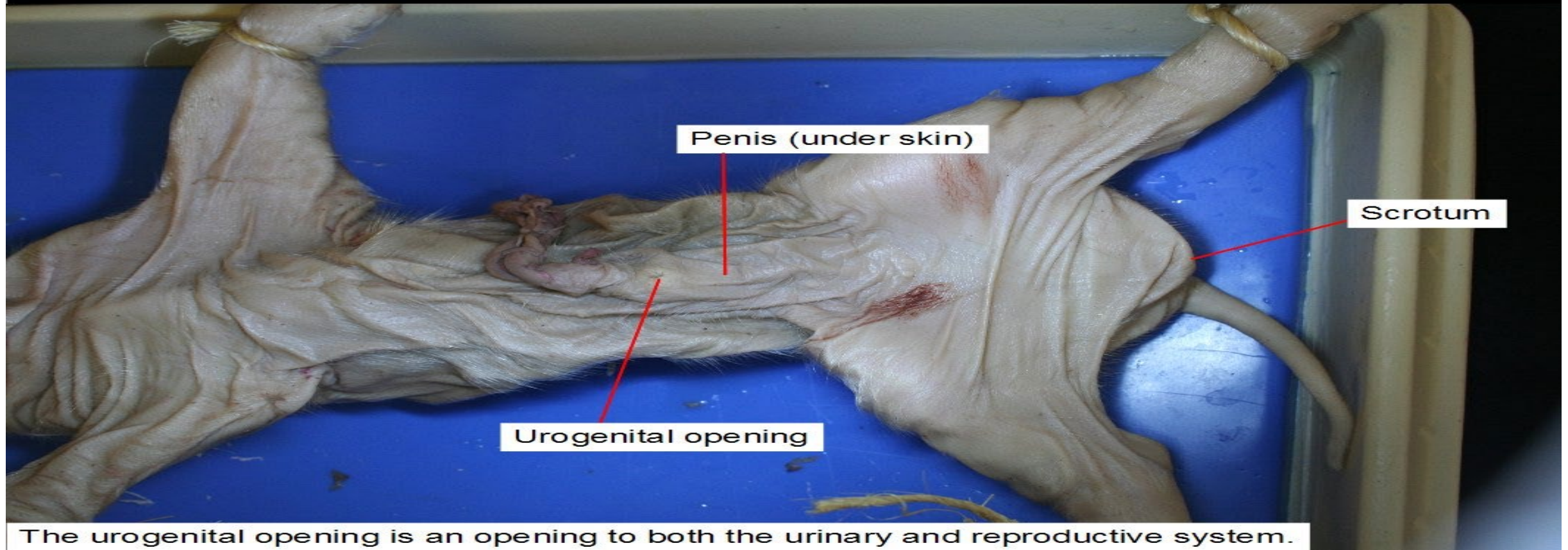
The uterus of a pig is different than that of a human in that the upper part of the pig uterus is divided into two uterine horns. Near the ovaries, the uterine horns become oviducts.



The urethra (carries urine from the bladder) merges with the vagina to form a common duct called the urogenital sinus.



Male- Ventral view



Reproductive System

Male

Urinary bladder

Anterior

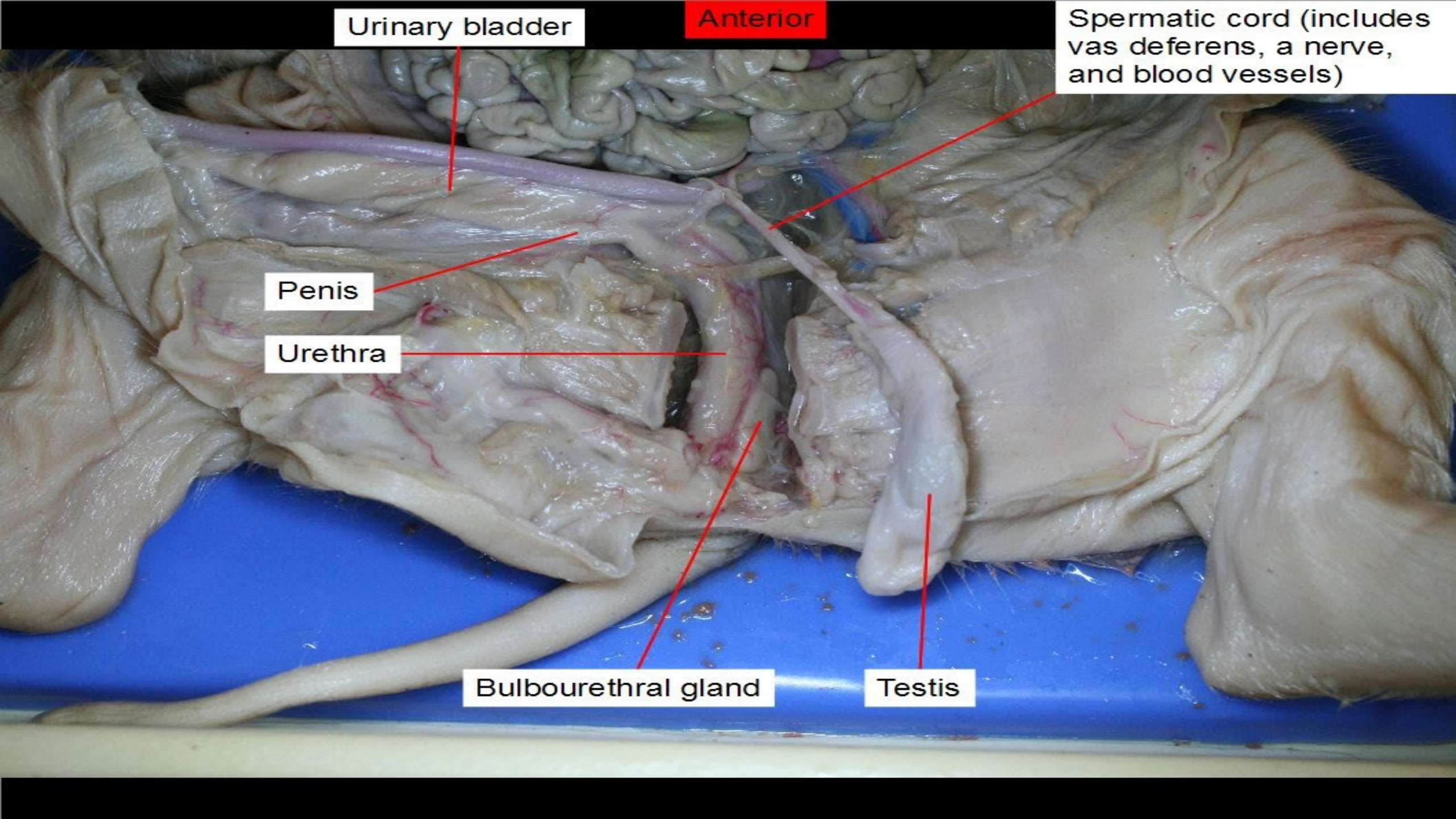
Spermatic cord (includes vas deferens, a nerve, and blood vessels)

Penis

Urethra

Bulbourethral gland

Testis



Urinary bladder

Anterior

Penis

Urethra

